



CONSUMER PRICE INDEX NUMBERS

(for AL/RL)

on base 1986-87 = 100

ANNUAL REPORT 2008-2009

GOVERNMENT OF INDIA

MINISTRY OF LABOUR & EMPLOYMENT

LABOUR BUREAU

SHIMLA/CHANDIGARH

PREFACE

Consumer Price Index Numbers for Agricultural Labourers and Rural Labourers (CPI-AL/RL) on base: 1986-87=100, which is considered as a guiding factor for fixation and revision of minimum wages of labourers engaged in agricultural occupations under the Minimum Wages Act, 1948, have been compiled, maintained and disseminated by the Labour Bureau. These indices, besides being utilized for wage indexation and measuring the inflationary trend in the country, are also utilized for different purposes by a large number of agencies/research scholars/policy makers.

The CPI-AL/RL are compiled on monthly basis as per the methodology approved by the Technical Advisory Committee on Statistics of Prices and Cost of Living (TAC on SPCL) and disseminated through Press Release, Monthly Index Letters, Indian Labour Journal and Website (www.labourbureau.gov.in).

This annual report, which is 12th in the series, has been brought out by the team of officers whose names are given in Annexure-II. They deserve my appreciation for putting in unstinted and sincere effort in bringing out this report in time.

Suggestions for further improvement of the publication are welcome.

HARBINDER SINGH
HEAD OF DEPARTMENT

LABOUR BUREAU, SHIMLA-171004.
DATED:- 24-3-2010

CONTENTS

	<i>Page No.</i>
Background and Methodology for compilation of Consumer Price Index Numbers for (i) Agricultural and (ii) Rural Labourers on base 1986-87=100	(i) - (viii)
Trends in the Consumer Price Index Numbers for (i) Agricultural and (ii) Rural Labourers (Base:1986-87=100) during 2008-09	(ix)–(xi)
Graph showing movement of All-India Consumer Price Index Numbers for Agricultural Labourers (Base:1986-87=100) during 2008-09- Exhibit-I	(xii)
Graph showing movement of All-India Consumer Price Index Numbers for Rural Labourers (Base:1986-87=100) during 2008-09- Exhibit-II	(xiii)
Table 1 Group-wise Agricultural Year Average All-India Consumer Price Index Numbers for Agricultural Labourers on base 1960-61=100	1
Table 2.01 Agricultural/Calendar Year Average Consumer Price Index Numbers for Agricultural and Rural Labourers - (All-India General/Food Index)	2
Table 2.02 State-wise Average Consumer Price Index Numbers for Agricultural and Rural Labourers for the Agricultural Years 2006-07 to 2008-09	3
Table 3 Monthly All-India Consumer Price Index Numbers for Agricultural and Rural Labourers for the Agricultural Years 2006-07 to 2008-09	4
Table 4 Group-wise All-India Consumer Price Index Numbers for the Agricultural and Calendar Years	5
Table 5.01 to 5.03 State-wise Monthly Consumer Price Index Numbers (General) for Agricultural Labourers for the Agricultural Years 2006-07, 2007-08 and 2008-09	6-8

Table 5.04 to 5.06	State-wise Monthly Consumer Price Index Numbers (General) for Rural Labourers for the Agricultural Years 2006-07, 2007-08 and 2008-09	9-11
Table 6.01	Group-wise All-India Monthly Consumer Price Index Numbers for Agricultural Labourers for the years 2006-07 to 2008-09	12
Table 6.02	Group-wise All-India Monthly Consumer Price Index Numbers for Rural Labourers for the years 2006-07 to 2008-09	13
Table 7.01 to 7.20	State-wise and Month-wise Consumer Price Index Numbers for Agricultural Labourers for the years 2006-07 to 2008-09 (by Groups)	14-33
Table 7.21 to 7.40	State-wise and Month-wise Consumer Price Index Numbers for Rural Labourers for the years 2006-07 to 2008-09 (by Groups)	34-53
Table 8	Group-wise Linking Factors between New Series of All-India Consumer Price Index Numbers for Agricultural Labourers on base 1986-87=100 and the Old Series on Base 1960-61=100	54
Table 9	State-wise Linking Factors between New Series of Consumer Price Index Numbers for Agricultural Labourers on Base 1986-87=100 and the Old Series on Base 1960-61=100 - General and Food Index	55-56
Table 10	All-India Item-wise Weights for New Series of Consumer Price Index Numbers on Base 1986-87=100 for Agricultural and Rural Labourers	57-63
Table 11	Point to point rate of inflation depicted by All-India Consumer Price Index Numbers for Agricultural/Rural Labourers on Base: 1986-87=100	64
Annexure-I	List of Reports brought out so far on the subject	65
Annexure-II	List of Officers/Staff Members associated with the Report	66

BACKGROUND AND METHODOLOGY FOR COMPILATION OF THE CONSUMER PRICE INDEX NUMBERS FOR (i) AGRICULTURAL LABOURERS AND (ii) RURAL LABOURERS ON BASE 1986-87=100

INTRODUCTION

The Labour Bureau has been compiling CPI Numbers for Agricultural Labourers since September, 1964. The existing series of CPI Numbers for (i) Agricultural and (ii) Rural Labourers (base 1986-87=100) replaced the earlier series on base 1960-61=100 w.e.f. November, 1995. For compilation of these index numbers, the Field Operations Division (FOD) of the National Sample Survey Organisation (NSSO) collects every month the data on prices from 600 sample villages selected from 20 States in a specially designed price collection schedule, i.e. Schedule 3.01(R). Consumer expenditure data collected by the NSSO during 38th round of NSS (1983) formed the basis of the State-wise weighting diagrams for the series. The methodology approved by the Technical Advisory Committee on Statistics of Prices and Cost of Living (TAC on SPCL) is followed for compilation of indices for 20 States and all-India separately for (i) Agricultural and (ii) Rural Labourers and these indices are released on monthly basis by 20th of every succeeding month.

CONCEPTS & DEFINITIONS

Rural Labour Households

Rural Labour Households are those households whose income, during the last 365 days, was more from wage paid manual labour (agricultural and/or non-agricultural) than either from paid non-manual employment or from self-employment.

Agricultural Labour households

The rural labour households, who derive 50 per cent or more of their total income from wage paid manual labour in agricultural activities, are treated as agricultural labour households.

Rural Labourer

Rural Labourer is a person who does manual work in rural areas in agricultural and/or non-agricultural occupation in return for wages in cash or kind, or partly in cash and partly in kind.

Agricultural Labourer

A person is treated as an agricultural labourer, if he/she follows one or more of the following agricultural occupations in the capacity of a labourer on hire, whether paid in cash or kind or partly in cash and partly in kind:-

- (a) Farming including cultivation, growing and harvesting of any agricultural commodity;
- (b) production, cultivation, growing and harvesting of any horticultural commodity;
- (c) dairy farming;
- (d) raising of livestock, bee-keeping or poultry farming; and
- (e) any practice performed on a farm as incidental to or in conjunction with the farm operations (including any forestry or timbering operations and the preparation for market and delivery to storage or to market or to carriage for transportation of farm products).

The manual work in fisheries was, however, excluded from the category of agricultural labourer. Further, carriage for transportation coming under the category (e) above, referred only to the first stage of transportation from farm to the first stage of disposal.

SCOPE & COVERAGE

The Consumer Price Index Numbers for Agricultural Labour cover the households of agricultural labourers and the Consumer Price Index Numbers for Rural Labour cover the households of rural labourers (including agricultural labourers). The rural retail prices utilised in these two series of index numbers are the same, but the weighting diagrams used for compiling these indices are different. As regards coverage of States, a Technical Working Group on Rural Retail Prices was constituted in 1974 under the Chairmanship of the Director, CSO which recommended 20 States, for which separate series of CPI Numbers were to be maintained. For Union Territories,

the Group felt that an attempt to compile separate series would increase the field work considerably without commensurate increase in utility. Therefore, the Group recommended that the Union Territories could use the index series of the adjoining States.

The State-wise sample sizes were decided by studying the variations in village wise prices in the old series of index numbers and keeping in view the need for constructing State-wise CPI Numbers for (i) Agricultural and (ii) Rural Labourers. The sample size for a State was allocated to the regions within it in proportion to their rural population and in multiples of three. A number of regions were formed within a State, according to similarity of agro-climatic conditions and density of population. Within each region, strata were formed by treating each district as a separate stratum. However, the smaller districts, within a particular NSS region, were merged to form a separate stratum. The allocation to a stratum was generally 3 villages, except in case of 13 Strata (one each in Assam, Karnataka, Manipur and Meghalaya; two each in Jammu & Kashmir, Kerala and West Bengal and three in Orissa) which had six villages each.

WEIGHTING DIAGRAM

The consumer expenditure data collected by the NSSO, in its 38th Round in 1983, was used for deriving weighting diagrams for all the 20 States and All-India, separately for Agricultural Labourers and Rural Labourers. The average budget derived from the household consumer expenditure survey recorded expenditure on a large number of goods and services. These items of expenditure were divided into two categories viz., (i) non-consumption out-go including unpriceable items, and (ii) consumption expenditure. Only consumption expenditure was taken into account for derivation of weighting diagrams. Expenditure on items like rent and repair of residential buildings or land, direct taxes, priest services (including ceremonial expenditure) and precious jewellery or ornaments (like gold, silver, pearl, etc.) was treated as non-consumption expenditure and thus excluded from the average budget. The expenditure on rest of the items (including the durable goods) in the average budget was considered as consumption expenditure.

In order to derive weights at item/sub-group/group level and calculation of the index, groups and sub-groups were formed, to the extent possible, on the pattern of CPI Numbers for industrial workers on base 1982=100 and in pursuance of the recommendations of the TAC on SPCL. The expenditure was categorised into following groups :-

- (i) Food;
- (ii) Pan, Supari, Tobacco & Intoxicants;
- (iii) Fuel & Light;
- (iv) Clothing, Bedding & Footwear; and
- (v) Miscellaneous.

As it was not feasible to include all the items of expenditure in the index basket because of their un-manageability due to large number or existence of items which can not be priced easily or non-availability of regular price data for some of the items, recourse to imputation of expenditure was undertaken.

Imputations were done at four levels, viz., (i) item level, (ii) section level, (iii) sub-group level, and (iv) group level. Item level imputation consisted of straight addition of expenditure of one or more unpriced items to a priced item within the same sub-group/group. Section level imputation consisted of proportionate distribution of expenditure of one or more unpriced items over several priced items which formed a distinct section within a sub-group/group. In such cases, the unpriced items were assumed to follow the combined price trend of more than one priced item within the same section. The remaining two levels of imputation consisted of proportionate distribution of expenditure of one or more unpriced items over all the priced items, included in the sub-group/group. In such cases, an excluded item could not be taken to follow the price trend of any specific priced item of the sub-group/group, nor the combined price trend of a section of included items. The implicit assumption behind the imputation was that the price behaviour of the imputed item was the same as that of the item/section/sub-group/group in which its expenditure had been imputed.

After completion of expenditure imputation process, as envisaged above, the resultant expenditure on each item within a sub-group/group was expressed as percentage of the total expenditure on the sub-group/group to obtain item weights within a sub-group/group. Similarly, sub-group/group weights were derived by working out the percentage expenditure, including sub-group/group level imputations, on each sub-group/group as compared to total consumption expenditure. This provided the weighting diagram for compilation of the Consumer Price Indices for (i) Agricultural and (ii) Rural Labourers of each State. From the State-level weighting diagrams, all-India weights have been derived.

SELECTION OF BASE YEAR

A number of factors are taken into account for determining the base year of the series. A period affected by developments of serious nature such as war, floods, draught etc. is not adopted as the base year because it cannot be treated as a normal year. Generally, a year during which the enquiry is conducted or a period not very distant from survey period for which reliable price data are available is adopted as the base year. The base period of the current series has been taken as agricultural year (July, 1986 to June, 1987). Though there is a gap between the weight base (1983) and the comparison base (1986-87), no adjustment in weights has been made owing to differences in price levels between two periods.

SEASONALITY

In the old series (1960-61=100), seasonal items did not feature in the index basket whereas in the current series, the seasonality factor has been taken into account by introducing a separate sub-group "Vegetables & Fruits" within "Food Group". The price quotations for certain items of this sub-group are not available throughout the year due to their seasonal nature. In order to meet such an exigency, a departure from the principle of fixed basket has been made. Though the sub-group weight for 'Vegetables and Fruits' remains fixed throughout the year, yet the weights of the items included in the sub-group may change according to their availability in the market. Only the available items during a month are retained for the purpose of index compilation and the weights of left out items within a given section of the sub-group are imputed to the retained items of the section on pro-rata basis.

COLLECTION OF RURAL RETAIL PRICES

The Field Operations Division of the NSSO has been assigned the job and responsibility of collection of rural retail prices every month from shops and markets catering to 600 representative sample villages spread over 66 NSS regions in 20 States. Price collection from these sample villages is staggered over the four weeks of a month, with one-fourth of the sample being covered every week. These prices are collected on the fixed price collection day which may be a "Haat" day for non-daily markets and any market day for daily markets. The price returns are scrutinised and processed in Labour Bureau and the discrepancies, if any, are sorted out through correspondence and field inspections by the staff of the Bureau. Thus, verified and accurate rural retail prices are utilised for index compilation.

TREATMENT OF ITEMS SUPPLIED THROUGH PUBLIC DISTRIBUTION SYSTEM (PDS)

For the items which are supplied through Public Distribution System (PDS), the weighted average of fair prices and open market prices are utilised for index compilation. The weight for fair prices is worked out as proportion of the total requirement met through fair price shops and the balance will form weight for open market prices. The availability of these items through PDS will, however, be restricted to the scale of admissibility fixed by the Government. The data in respect of rationed items are collected from selected fair price shops in a specially designed proforma. The Government of India revamped the public distribution system in 1995-96 and a new economic criterion was set up for distribution of rationed items through PDS. Under this system, highly subsidised rates are being charged from the beneficiaries living below poverty line (BPL) and moderate subsidised rates from the beneficiaries living above poverty line (APL). Thus, owing to introduction of this new system two different rates i.e., the BPL rates and the APL rates started flowing in the price schedules in place of a single fair price rate being reported earlier. The information relating to APL cards and BPL cards is being reported separately by the price collectors and used for arriving at weighted average price of rationed items on the basis of the proportion of families living above and below poverty line.

COMPILATION OF INDEX NUMBERS

State Indices

The indices are compiled separately for each of the 20 States at general as well as at sub-group/group level. In the compilation of the state index, the village-wise price relative of each item is worked out by expressing the current price as a percentage of base year price. A simple average of village wise price relatives is worked out to arrive at regional price relative in the State. Regional price relatives, thus derived, are weighted to arrive at the State level price relatives, the weights being the estimated expenditure of all rural/agricultural labour households in a region as a proportion to expenditure of all the concerned households of all regions in the State. The State index from these state price relatives is worked out by using the Laspeyre's base weighted formula which is given below:-

$$I_n = \frac{\sum \left(\frac{P_n}{P_o}\right) P_o Q_o}{\sum P_o Q_o} \times 100$$

$$\text{or} = \frac{\sum P_n Q_o}{\sum P_o Q_o} \times 100$$

Where:

I_n = Index Numbers

P_n = Price for current period

P_o = Price for base period

Q_o = Quantity for base period

All-India Index

The all-India index is worked out as a weighted average of the indices of 20 States, weights being the estimated consumption expenditure of all rural and agricultural labour households in each State as a proportion of corresponding expenditure for all-India. All-India group indices are also compiled by using the State weights in the particular group, derived as a proportion of corresponding expenditure at all-India level.

-
- Annual Index Numbers for agricultural years and calendar years wherever mentioned in the report, unless specified, are simple averages of 12 months.

 - To obtain indices on old series of CPI-AL (Base: 1960-61=100), the index figures of 1986-87 series need to be multiplied by the linking factors as given below:-
General Index = 5.89
Food Index = 6.38

**Consumer Price Index Numbers for CPI-AL/RL (Base:1986-87=100)
Annual Report-2008-09**

Summary

The Labour Bureau has been compiling the current series of Consumer Price Index Numbers for (i) Agricultural Labourers (CPI-AL) and (ii) Rural Labourers (CPI-RL) on base 1986-87=100 since November, 1995 replacing the earlier series of Consumer Price Index Numbers for Agricultural Labourers on base 1960-61=100. These indices are compiled on monthly basis and released on 20th of the succeeding month. The consumer expenditure survey data collected during 38th round of NSS in 1983 formed the basis for derivation of the weighting diagram for the series. The rural retail prices which go into the compilation of Consumer Price Index Numbers are collected from 600 sample villages spread over 66 NSS regions of 20 States by the Field Operations Division of the National Sample Survey Organisation.

The analysis of the movement of All India Consumer Price Index Numbers for the year 2008-09 revealed the following trends:

Consumer Price Index Numbers of Agricultural Labourers (CPI-AL)

1. CPI-AL showed an increasing trend during the whole year except for the month of December, 2008. It increased from 442 points in July, 2008 to 460 points in November, 2008. After declining by 1 point in December, 2008, it again started increasing and reached the level of 484 points in June, 2009 (Table-3).
2. The increase in index during the year 2008-09 was mainly on account of increase in the prices of rice, wheat atta, jowar, bajra/bajra atta, pulses, goat meat, fish fresh/dry, mustard oil, groundnut oil, ghee, vanaspati, milk, onion, chillies dry, turmeric, vegetables & fruits, sugar, gur, tea leaf, tea readymade, pan leaf, tobacco leaf, bidi, cigarette, firewood, washing soap, barber charges and bus fare.
3. The decline in index during December, 2008 was mainly on account of decrease in the prices of chillies green and vegetables and fruits.

Consumer Price Index Numbers of Rural Labourers (CPI-RL)

1. The analysis of the movement of CPI-RL also showed the same trend as was shown by the CPI-AL. It increased from 442 points in July, 2008 to 460 points in November, 2008. After declining by 1 point in December, 2008, it again started increasing and reached the level of 484 points in June, 2009 (Table-3).

Point to Point Rate of Inflation

1. The point to point rate of inflation based on CPI-AL during 2008-2009 depicted a fluctuating trend. The inflation rate which was at 9.41 percent in July, 2008 increased to 11.14 percent in October, 2008. It, however, declined to 11.11 percent in November, 2008 and thereafter, it started increasing and reached the level of 11.62 percent in January, 2009. After showing a declining trend during February, 2009 to April, 2009 to reach the level of 9.09 percent, it again started increasing and reached the level of 11.52 percent in June, 2009. (Table-11).

2. A similar fluctuating trend was observed in the rate of inflation in case of CPI-RL during 2008-09. It increased from 9.41 percent in July, 2008 to 11.14 percent in October, 2008. It, however, decreased to 11.11 percent in November, 2008 and thereafter, it started increasing to stand at 11.35 percent in January, 2009. After showing a declining trend during February, 2009 to April, 2009 to reach the level of 9.09 percent, it again started increasing and reached the level of 11.26 percent in June, 2009. (Table-11).

CPI-AL and CPI-RL (General and Food)

The monthly increase in the CPI-AL and CPI-RL (General and Food), for the period 2008-09 has been shown in Exhibit I and II respectively.

Exhibit-1
**All-India Consumer Price Index Numbers for Agricultural
Labourers for the year 2008-09 on Base 1986-87=100
(General and Food Group)**

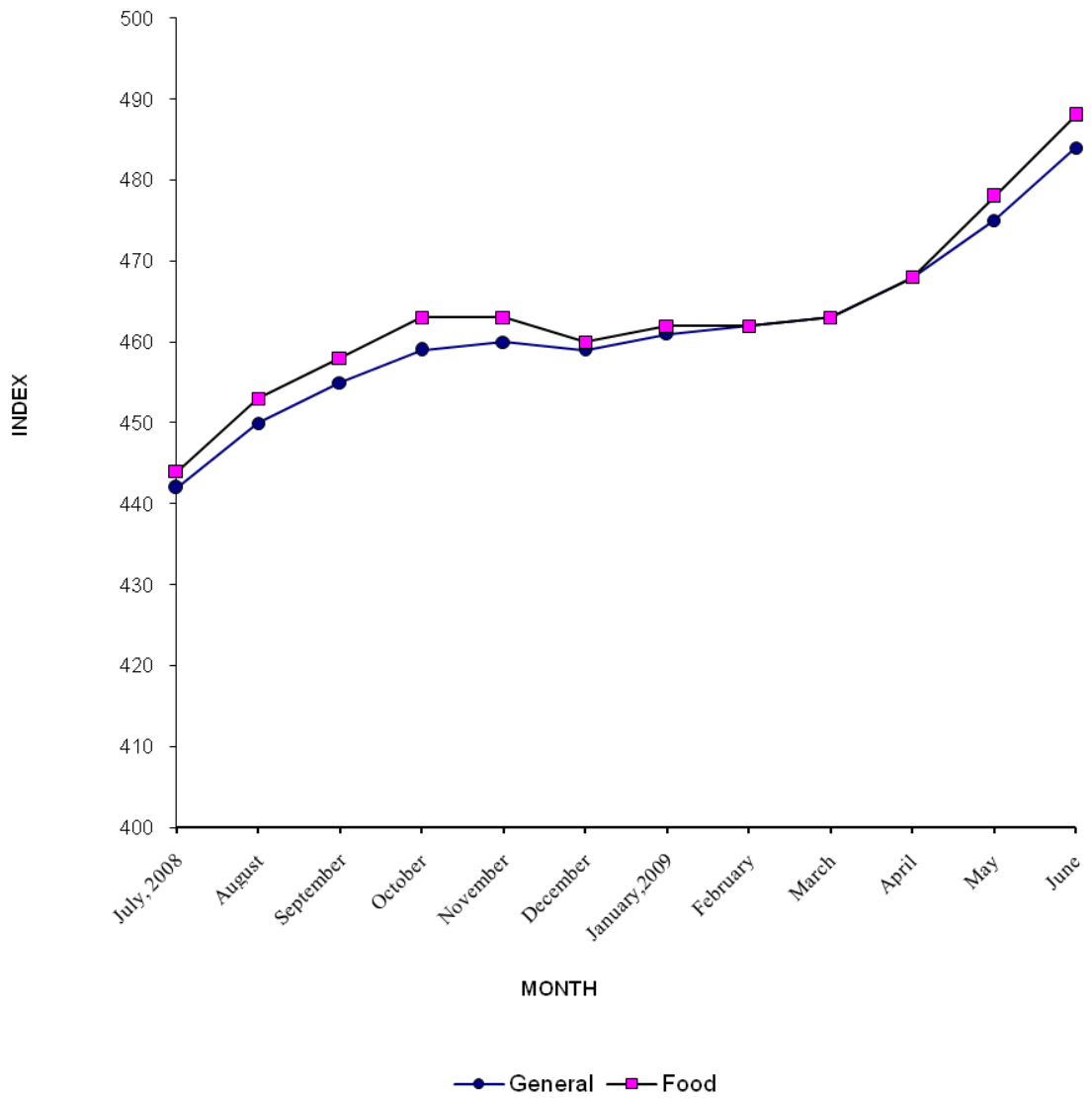


Exhibit-II
All-India Consumer Price Index Numbers for Rural Labourers for the year 2008-09 on Base 1986-87=100 (General and Food Group)

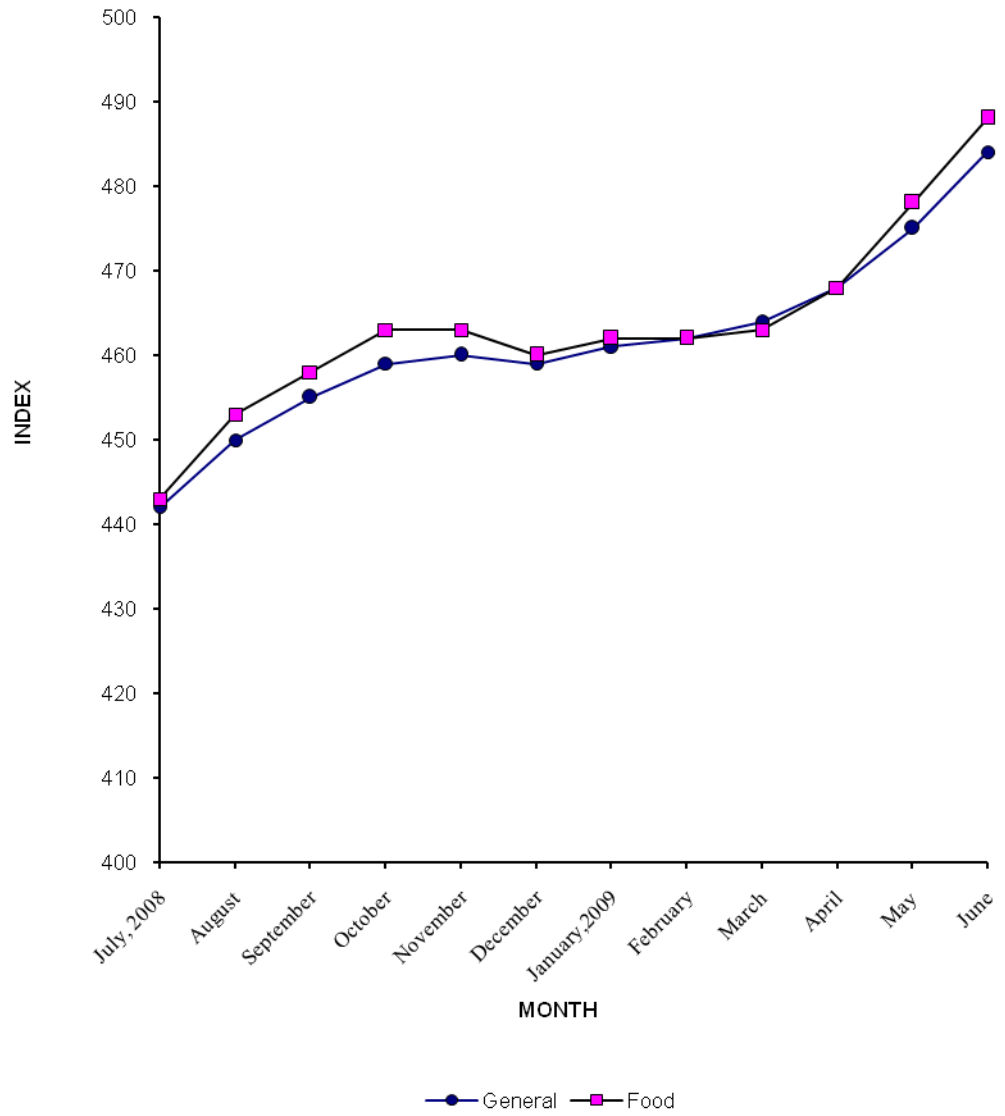


Table 1

**GROUP-WISE AGRICULTURAL YEAR AVERAGE ALL-INDIA CONSUMER PRICE INDEX
NUMBERS FOR AGRICULTURAL LABOURERS ON BASE 1960-61 = 100**

Year/Group	Food	Fuel & Light	Clothing, Bedding & Footwear	Miscellan- eous	General Index
1	2	3	4	5	6
1978-79	340	142	315	269	317
1979-80	390	155	332	289	360
1980-81	448	159	355	323	409
1981-82	492	167	386	348	448
1982-83	527	169	416	392	481
1983-84	573	175	440	436	523
1984-85	569	180	476	478	525
1985-86	600	189	509	508	555
1986-87	623	194	529	549	578
1987-88	706	196	563	622	650
1988-89	791	199	607	676	724
1989-90	814	199	667	761	752
1990-91	900	214	741	837	830
1991-92	1106	220	840	951	1007
1992-93	1192	218	944	1031	1086
1993-94	1251	225	1069	1108	1147
1994-95	1399	228	1245	1221	1283
July, 95 to Oct.,95 (4 months average)	1538	232	1375	1297	1404

Agricultural year - July to June

Note : New series of the Consumer Price Index Numbers for Agricultural and Rural Labourers on Base 1986-87= 100 released with effect from the month of November, 1995.

Table 2.01

**AGRICULTURAL/CALENDAR YEAR AVERAGE CONSUMER PRICE
INDEX NUMBERS FOR AGRICULTURAL AND RURAL LABOURERS
(ALL-INDIA GENERAL/ FOOD INDEX)**

(Base 1986-87=100)

Year	Agricultural year average index for				Year	Calendar year average index for			
	General		Food			General		Food	
	AL	RL	AL	RL		AL	RL	AL	RL
1	2	3	4	5	6	7	8	9	10
1995-1996*	240	240	242	242	1995*	239	239	242	242
1996-1997	260	260	264	264	1996	249	250	253	253
1997-1998	269	270	269	270	1997	262	263	262	263
1998-1999	299	299	305	305	1998	287	288	293	293
1999-2000	309	310	314	313	1999	304	305	310	310
2000-2001	304	306	299	300	2000	307	308	307	308
2001-2002	311	313	304	305	2001	307	309	300	302
2002-2003	323	325	316	317	2002	315	318	308	309
2003-2004	332	335	326	327	2003	328	331	322	323
2004-2005	342	344	335	335	2004	337	340	331	332
2005-2006	358	360	351	352	2005	348	351	341	341
2006-2007	388	389	384	384	2006	372	373	366	366
2007-2008	417	418	416	416	2007	402	403	400	399
2008-2009	462	462	464	463	2008	439	440	440	440

* = November, 1995 to June, 1996 in the case of agricultural year and November, 1995 to December, 1995 in the case of calendar year.

AL = Agricultural Labourers

RL = Rural Labourers

Agricultural Year - July to June.

3

Table 2.02

STATE -WISE AVERAGE CONSUMER PRICE INDEX NUMBERS FOR AGRICULTURAL AND RURAL LABOURERS FOR THE AGRICULTURAL YEARS 2006-2007 to 2008-2009

(Base 1986-87=100)

Sl. No.	State	State weight in All-India		2006-2007		2007-2008		2008-2009	
		AL	RL	AL	RL	AL	RL	AL	RL
1	2	3	4	5	6	7	8	9	10
1.	Andhra Pradesh	12.97	12.21	401	401	430	429	484	482
2.	Assam	1.69	1.96	388	390	417	419	451	454
3.	Bihar	11.38	9.81	384	384	411	412	446	447
4.	Gujarat	5.20	5.04	403	403	424	425	459	460
5.	Haryana	1.81	2.07	403	404	447	445	498	495
6.	Himachal Pradesh	0.10	0.19	367	377	376	388	406	420
7.	Jammu & Kashmir	0.26	0.52	392	393	413	413	453	451
8.	Karnataka	6.67	6.27	367	367	406	407	458	459
9.	Kerala	5.02	6.33	374	378	403	404	454	456
10.	Madhya Pradesh	6.86	6.38	388	392	412	415	459	463
11.	Maharashtra	9.96	9.96	402	400	432	428	475	470
12.	Manipur	0.10	0.08	337	338	367	368	407	407
13.	Meghalaya	0.13	0.12	410	408	439	436	484	481
14.	Orissa	5.07	4.47	365	366	400	400	438	439
15.	Punjab	3.02	3.28	417	419	448	449	501	501
16.	Rajasthan	2.14	2.78	413	412	439	438	490	486
17.	Tamil Nadu	8.47	9.35	371	370	403	402	455	452
18.	Tripura	0.15	0.27	383	373	407	399	433	429
19.	Uttar Pradesh	9.61	9.74	408	409	433	434	469	469
20.	West Bengal	9.39	9.17	365	368	395	398	432	435
All India		100.00	100.00	388	389	417	418	462	462

AL - Agricultural Labourers

RL - Rural Labourers

Table 3

**MONTHLY ALL-INDIA CONSUMER PRICE INDEX NUMBERS FOR AGRICULTURAL
AND RURAL LABOURERS FOR THE AGRICULTURAL YEARS 2006-2007 to 2008-2009**

(Base: 1986-87=100)

Year/Month	General Index						Food Index					
	2006-2007		2007-2008		2008-2009		2006-2007		2007-2008		2008-2009	
	AL	RL	AL	RL	AL	RL	AL	RL	AL	RL	AL	RL
1	4	5	6	7	6	7	8	9	10	11	12	13
July	372	374	404	404	442	442	366	367	401	401	444	443
August	375	376	408	408	450	450	369	369	407	406	453	453
September	380	381	410	410	455	455	376	376	409	409	458	458
October	386	387	413	413	459	459	383	383	413	412	463	463
November	390	391	414	414	460	460	388	388	413	412	463	463
December	390	391	413	413	459	459	387	387	411	411	460	460
January	391	391	413	414	461	461	387	387	410	409	462	462
February	392	393	417	417	462	462	388	388	414	414	462	462
March	392	393	423	423	463	464	389	389	422	421	463	463
April	394	395	429	429	468	468	390	390	429	429	468	468
May	395	396	431	431	475	475	391	391	430	430	478	478
June	399	400	434	435	484	484	396	396	434	434	488	488
Agricultural	388	389	417	418	462	462	384	384	416	416	464	463
Year Average												

Agricultural Year - July to June

AL - Agricultural Labourers

RL - Rural Labourers

Table 4

**GROUP-WISE ALL-INDIA CONSUMER PRICE INDEX NUMBERS
FOR THE AGRICULTURAL AND CALENDAR YEARS**

(Base: 1986-87=100)

Group	Weight		Agricultural year average						Calendar year average					
	AL	RL	2006-2007		2007- 2008		2008-2009		2006		2007		2008	
			AL	RL	AL	RL	AL	RL	AL	RL	AL	RL	AL	RL
1	2	3	4	5	6	7	8	9	10	11	12	13	14	15
I-A Food	69.15	66.77	384	384	416	416	464	463	366	366	400	399	440	440
I-B Pan, Supari, Tobacco & Intoxicants	3.79	3.70	436	438	483	486	550	552	421	423	459	462	513	516
II- Fuel & Light	8.35	7.90	384	383	411	411	456	455	370	370	396	396	432	432
III- Clothing, Bedding & Footwear	6.98	9.76	381	391	388	402	414	431	375	385	384	396	400	414
IV- Misce- llaneous	11.73	11.87	404	403	428	426	456	456	391	391	415	413	442	441
General Index	100.00	100.00	388	389	417	418	462	462	372	373	402	403	439	440

AL- Agricultural Labourers

RL-Rural Labourers

Agricultural Year – July to June

Table 5.01

**STATE -WISE MONTHLY CONSUMER PRICE INDEX NUMBERS (GENERAL) FOR
AGRICULTURAL LABOURERS FOR THE AGRICULTURAL YEAR 2006-2007**

(Base : 1986-87=100)

Sl. No.	State	State weight in All-India	2006						2007					
			Jul	Aug	Sep	Oct	Nov	Dec	Jan	Feb	Mar	Apr	May	Jun
1	2	3	4	5	6	7	8	9	10	11	12	13	14	15
1.	Andhra Pradesh	12.97	385	389	394	397	402	403	404	407	405	406	408	415
2.	Assam	1.69	374	376	382	389	389	386	385	388	395	391	395	400
3	Bihar	11.38	368	366	376	389	390	388	387	388	394	391	385	385
4	Gujarat	5.20	384	389	395	400	403	404	403	405	408	412	413	415
5	Haryana	1.81	387	391	396	401	405	404	403	404	406	410	413	421
6	Himachal Pradesh	0.10	354	356	363	368	371	369	370	373	370	373	372	367
7	Jammu & Kashmir	0.26	376	379	383	386	390	392	393	395	399	400	402	403
8	Karnataka	6.67	350	351	354	359	364	367	370	373	373	377	383	388
9	Kerala	5.02	367	367	366	366	373	376	378	379	376	376	380	385
10	Madhya Pradesh	6.86	374	377	382	387	392	391	390	391	390	391	392	397
11	Maharashtra	9.96	385	390	395	400	401	403	406	407	405	407	411	415
12	Manipur	0.10	333	333	335	333	333	335	333	332	334	343	348	353
13	Meghalaya	0.13	398	402	405	406	409	410	411	413	412	415	418	422
14	Orissa	5.07	346	355	359	367	371	367	367	365	366	372	370	376
15	Punjab	3.02	398	402	408	413	418	421	421	423	421	426	423	429
16	Rajasthan	2.14	394	400	404	407	409	411	416	422	423	426	424	422
17	Tamil Nadu	8.47	357	358	360	363	367	371	375	378	375	379	382	386
18	Tripura	0.15	374	375	380	389	385	380	377	380	386	387	389	395
19	Uttar Pradesh	9.61	388	390	398	405	416	412	413	412	415	417	416	418
20	West Bengal	9.39	355	354	362	369	370	368	364	362	365	366	370	371
	All-India	100.00	372	375	380	386	390	390	391	392	392	394	395	399

Table 5.02

**STATE -WISE MONTHLY CONSUMER PRICE INDEX NUMBERS (GENERAL) FOR
AGRICULTURAL LABOURERS FOR THE AGRICULTURAL YEAR 2007-2008**

(Base:1986-87=100)

Sl. No.	State	State weight in All-India	2007						2008					
			Jul	Aug	Sep	Oct	Nov	Dec	Jan	Feb	Mar	Apr	May	Jun
1	2	3	4	5	6	7	8	9	10	11	12	13	14	15
1.	Andhra Pradesh	12.97	418	421	421	424	427	427	426	430	435	441	445	450
2.	Assam	1.69	405	409	414	419	420	416	410	412	417	423	424	430
3	Bihar	11.38	390	400	408	415	413	411	409	413	416	422	419	421
4	Gujarat	5.20	419	423	425	428	425	421	419	422	425	426	427	431
5	Haryana	1.81	426	432	442	447	443	441	441	448	459	461	460	467
6	Himachal Pradesh	0.10	372	375	380	387	384	375	369	370	370	377	375	381
7	Jammu & Kashmir	0.26	403	405	409	413	412	408	409	414	418	419	420	423
8	Karnataka	6.67	395	399	398	398	402	402	404	405	409	418	421	425
9	Kerala	5.02	387	388	388	389	394	399	404	405	411	420	425	427
10	Madhya Pradesh	6.86	402	403	401	405	407	409	406	409	418	426	427	430
11	Maharashtra	9.96	420	424	423	425	427	428	431	431	437	442	443	449
12	Manipur	0.10	362	360	360	362	364	362	366	366	370	373	378	380
13	Meghalaya	0.13	420	426	435	439	443	438	439	435	441	444	450	452
14	Orissa	5.07	385	391	395	401	398	398	392	397	401	408	413	419
15	Punjab	3.02	432	437	446	446	439	435	436	445	454	465	465	472
16	Rajasthan	2.14	428	430	430	434	433	434	437	440	447	450	453	457
17	Tamil Nadu	8.47	388	388	389	390	395	398	401	406	412	418	423	425
18	Tripura	0.15	394	400	410	416	411	413	404	399	404	410	410	413
19	Uttar Pradesh	9.61	423	429	431	429	428	424	423	431	441	447	446	449
20	West Bengal	9.39	375	381	389	394	396	391	390	394	402	410	409	411
	All-India	100.00	404	408	410	413	414	413	413	417	423	429	431	434

Table 5.03

**STATE -WISE MONTHLY CONSUMER PRICE INDEX NUMBERS (GENERAL) FOR
AGRICULTURAL LABOURERS FOR THE AGRICULTURAL YEAR 2008-2009**

(Base: 1986-87=100)

Sl. No.	State	State weight in All-India	2008						2009					
			Jul	Aug	Sep	Oct	Nov	Dec	Jan	Feb	Mar	Apr	May	Jun
1	2	3	4	5	6	7	8	9	10	11	12	13	14	15
1.	Andhra Pradesh	12.97	458	468	478	486	486	484	486	486	486	489	497	509
2.	Assam	1.69	437	442	444	449	450	449	450	448	450	454	462	480
3	Bihar	11.38	433	440	443	446	444	440	442	447	447	454	458	462
4	Gujarat	5.20	438	447	450	454	457	454	458	460	464	468	476	486
5	Haryana	1.81	475	483	489	492	495	494	495	501	503	508	518	525
6	Himachal Pradesh	0.10	390	397	407	410	411	404	408	405	406	407	412	419
7	Jammu & Kashmir	0.26	429	430	440	444	450	452	455	458	462	468	475	474
8	Karnataka	6.67	429	437	446	454	461	460	465	463	463	464	476	478
9	Kerala	5.02	432	436	442	450	456	459	463	460	457	460	463	469
10	Madhya Pradesh	6.86	440	446	450	451	451	452	455	459	462	466	480	491
11	Maharashtra	9.96	457	467	469	476	474	471	474	474	474	479	485	499
12	Manipur	0.10	385	389	396	399	404	405	409	411	413	416	421	432
13	Meghalaya	0.13	464	470	475	476	479	480	483	483	488	496	506	511
14	Orissa	5.07	429	433	435	439	435	433	431	430	438	444	452	462
15	Punjab	3.02	480	491	497	497	500	496	496	499	502	507	523	529
16	Rajasthan	2.14	468	473	477	483	483	482	488	492	497	502	515	523
17	Tamil Nadu	8.47	431	437	446	449	454	458	461	462	460	459	465	474
18	Tripura	0.15	417	423	425	429	435	434	433	432	437	440	444	447
19	Uttar Pradesh	9.61	458	464	467	465	465	459	463	464	469	477	483	490
20	West Bengal	9.39	415	423	428	432	433	431	429	430	431	437	445	449
	All-India	100.00	442	450	455	459	460	459	461	462	463	468	475	484

Table 5.04

**STATE -WISE MONTHLY CONSUMER PRICE INDEX NUMBERS (GENERAL)
FOR RURAL LABOURERS FOR THE AGRICULTURAL YEAR 2006-2007**

(Base: 1986-87=100)

Sl. No.	State	State weight in All-India	2006						2007					
			Jul	Aug	Sep	Oct	Nov	Dec	Jan	Feb	Mar	Apr	May	Jun
1	2	3	4	5	6	7	8	9	10	11	12	13	14	15
1.	Andhra Pradesh	12.21	385	389	394	397	401	403	403	407	404	406	408	415
2.	Assam	1.96	376	378	384	392	392	389	388	390	397	394	399	403
3	Bihar	9.81	369	367	377	389	390	388	387	388	394	391	386	385
4	Gujarat	5.04	386	390	396	400	403	404	403	406	409	412	413	416
5	Haryana	2.07	389	393	397	402	406	405	404	405	408	410	413	420
6	Himachal Pradesh	0.19	362	364	371	377	381	379	377	380	380	384	383	380
7	Jammu & Kashmir	0.52	377	380	384	389	394	396	396	397	400	402	403	403
8	Karnataka	6.27	350	351	355	359	364	366	370	372	373	377	383	388
9	Kerala	6.33	371	370	369	370	377	380	381	382	379	380	384	388
10	Madhya Pradesh	6.38	377	380	386	391	396	395	394	395	394	395	396	400
11	Maharashtra	9.96	385	389	393	398	399	401	404	404	403	405	409	412
12	Manipur	0.08	334	334	335	334	334	335	334	332	335	344	349	354
13	Meghalaya	0.12	395	399	402	404	406	408	408	411	410	413	416	420
14	Orissa	4.47	346	355	360	368	371	367	367	366	367	372	371	376
15	Punjab	3.28	401	406	411	416	420	422	422	424	422	427	425	430
16	Rajasthan	2.78	393	398	403	406	409	411	415	420	422	425	422	421
17	Tamil Nadu	9.35	357	358	360	362	367	371	374	377	374	377	380	384
18	Tripura	0.27	366	366	370	379	375	370	367	370	374	376	378	384
19	Uttar Pradesh	9.74	389	391	399	405	416	412	413	412	415	417	417	418
20	West Bengal	9.17	359	357	366	372	373	371	367	365	368	369	373	376
	All-India	100.00	374	376	381	387	391	391	391	393	393	395	396	400

Table 5.05

**STATE -WISE MONTHLY CONSUMER PRICE INDEX NUMBERS (GENERAL)
FOR RURAL LABOURERS FOR THE AGRICULTURAL YEAR 2007-2008**

(Base : 1986-87=100)

Sl. No.	State	State weight in All-India	2007						2008					
			Jul	Aug	Sep	Oct	Nov	Dec	Jan	Feb	Mar	Apr	May	Jun
1	2	3	4	5	6	7	8	9	10	11	12	13	14	15
1.	Andhra Pradesh	12.21	418	420	420	423	426	426	425	429	434	439	444	448
2.	Assam	1.96	408	412	417	423	423	419	413	415	419	425	426	432
3	Bihar	9.81	391	400	408	415	413	411	409	413	417	422	419	421
4	Gujarat	5.04	420	424	425	429	425	422	419	422	425	427	428	433
5	Haryana	2.07	425	430	439	446	441	439	439	446	457	459	458	464
6	Himachal Pradesh	0.19	383	386	391	396	392	385	379	381	384	392	390	397
7	Jammu & Kashmir	0.52	403	405	409	414	413	409	410	415	419	420	421	423
8	Karnataka	6.27	395	399	398	398	403	403	405	405	409	418	421	425
9	Kerala	6.33	389	390	390	391	395	401	405	407	412	420	425	428
10	Madhya Pradesh	6.38	405	406	404	408	410	412	410	413	421	429	430	434
11	Maharashtra	9.96	417	420	420	421	423	424	427	427	433	438	438	445
12	Manipur	0.08	363	361	361	363	365	363	367	367	370	374	379	381
13	Meghalaya	0.12	418	424	432	436	440	435	436	433	439	442	448	450
14	Orissa	4.47	385	391	395	401	398	398	393	398	401	408	413	419
15	Punjab	3.28	433	438	447	447	441	437	439	446	454	464	465	471
16	Rajasthan	2.78	427	428	428	432	431	432	436	438	445	448	450	455
17	Tamil Nadu	9.35	387	387	388	389	394	397	400	405	410	417	422	424
18	Tripura	0.27	383	390	402	407	403	406	397	393	397	404	404	407
19	Uttar Pradesh	9.74	424	429	431	430	429	424	424	432	441	448	446	450
20	West Bengal	9.17	378	385	392	397	399	394	393	397	405	412	411	413
	All-India	100.00	404	408	410	413	414	413	414	417	423	429	431	435

Table 5.06

**STATE -WISE MONTHLY CONSUMER PRICE INDEX NUMBERS (GENERAL)
FOR RURAL LABOURERS FOR THE AGRICULTURAL YEAR 2008-2009**

(Base: 1986-87=100)

Sl. No.	State	State weight in All-India	2008						2009					
			Jul	Aug	Sep	Oct	Nov	Dec	Jan	Feb	Mar	Apr	May	Jun
1	2	3	4	5	6	7	8	9	10	11	12	13	14	15
1.	Andhra Pradesh	12.21	456	466	475	483	483	482	484	484	484	487	495	507
2.	Assam	1.96	439	445	446	452	453	452	452	450	453	457	465	482
3	Bihar	9.81	433	440	444	446	444	441	443	447	447	454	458	463
4	Gujarat	5.04	439	447	450	454	458	455	460	462	466	469	477	488
5	Haryana	2.07	472	481	487	490	492	491	492	498	500	505	514	521
6	Himachal Pradesh	0.19	405	412	419	424	424	416	417	416	419	423	427	436
7	Jammu & Kashmir	0.52	429	431	440	443	448	448	452	454	459	465	473	471
8	Karnataka	6.27	430	437	446	454	462	460	466	464	465	466	477	479
9	Kerala	6.33	433	437	444	451	458	461	464	462	459	462	466	472
10	Madhya Pradesh	6.38	442	449	453	455	455	457	460	464	468	471	484	495
11	Maharashtra	9.96	453	463	465	471	469	467	469	469	469	474	479	494
12	Manipur	0.08	386	390	397	400	405	405	409	411	414	416	422	433
13	Meghalaya	0.12	461	467	472	473	476	477	480	480	485	493	502	507
14	Orissa	4.47	429	433	435	439	435	433	431	430	439	445	452	462
15	Punjab	3.28	479	489	495	496	499	496	497	501	503	508	523	528
16	Rajasthan	2.78	465	470	474	478	478	477	483	487	493	498	510	517
17	Tamil Nadu	9.35	429	435	444	447	452	456	459	459	458	457	462	471
18	Tripura	0.27	412	418	420	424	431	430	429	428	432	436	440	443
19	Uttar Pradesh	9.74	459	465	468	467	466	460	464	464	469	477	481	488
20	West Bengal	9.17	417	426	431	435	436	434	432	434	435	442	449	453
	All-India	100.00	442	450	455	459	460	459	461	462	464	468	475	484

Table 6.01

**GROUP-WISE ALL-INDIA MONTHLY CONSUMER PRICE INDEX NUMBERS
FOR AGRICULTURAL LABOURERS FOR THE YEARS 2006-07 TO 2008-09**

(Base : 1986-87 = 100)

Group/Year	Weight	Month											
		Jul	Aug	Sep	Oct	Nov	Dec	Jan	Feb	Mar	Apr	May	Jun
1	2	3	4	5	6	7	8	9	10	11	12	13	14
<u>I-A-Food</u>	69.15												
2006-2007		366	369	376	383	388	387	387	388	389	390	391	396
2007-2008		401	407	409	413	413	411	410	414	422	429	430	434
2008-2009		444	453	458	463	463	460	462	462	463	468	478	488
<u>I-B-Pan, Supari, Tobacco & Intoxicants</u>	3.79												
2006-2007		418	421	423	427	429	433	438	443	444	448	451	457
2007-2008		464	467	470	473	476	482	486	488	490	496	501	508
2008-2009		514	522	530	535	543	548	558	560	565	568	573	580
<u>II-Fuel & Light</u>	8.35												
2006-2007		372	373	375	377	380	384	386	386	388	392	396	394
2007-2008		396	400	402	403	405	408	410	417	419	422	425	429
2008-2009		433	438	443	447	450	454	458	464	467	468	470	476
<u>III-Clothing, Bedding & Footwear</u>	6.98												
2006-2007		375	376	378	379	381	381	381	382	383	384	384	384
2007-2008		384	383	385	385	386	386	388	389	390	391	395	396
2008-2009		398	402	408	411	413	413	415	417	419	422	425	429
<u>IV-Miscellaneous</u>	11.73												
2006-2007		393	396	398	401	403	405	405	407	408	409	411	413
2007-2008		415	418	420	423	424	426	428	431	433	435	437	440
2008-2009		444	447	450	453	455	456	457	459	461	462	466	467
<u>General Index</u>	100.00												
2006-2007		372	375	380	386	390	390	391	392	392	394	395	399
2007-2008		404	408	410	413	414	413	413	417	423	429	431	434
2008-2009		442	450	455	459	460	459	461	462	463	468	475	484

Table 6.02

**GROUP-WISE ALL-INDIA MONTHLY CONSUMER PRICE INDEX NUMBERS
FOR RURAL LABOURERS FOR THE YEARS 2006-07 TO 2008-09**

(Base : 1986-87 = 100)

Group/Year	Weight	Month											
		Jul	Aug	Sep	Oct	Nov	Dec	Jan	Feb	Mar	Apr	May	Jun
1	2	3	4	5	6	7	8	9	10	11	12	13	14
<u>I-A-Food</u>	66.77												
2006-2007		367	369	376	383	388	387	387	388	389	390	391	396
2007-2008		401	406	409	412	412	411	409	414	421	429	430	434
2007-2008		443	453	458	463	463	460	462	462	463	468	478	488
<u>I-B-Pan, Supari, Tobacco & Intoxicants</u>	3.70												
2006-2007		420	423	424	429	431	435	439	444	445	450	454	460
2007-2008		467	470	473	476	479	485	488	490	492	499	504	510
2008-2009		516	524	532	538	545	550	560	561	566	569	575	582
<u>II-Fuel & Light</u>	7.90												
2006-2007		372	373	374	377	379	384	386	386	388	392	396	394
2007-2008		396	399	401	403	405	408	411	417	419	422	425	429
2008-2009		433	438	443	446	450	454	457	463	467	468	470	476
<u>III-Clothing, Bedding & Footwear</u>	9.76												
2006-2007		385	387	389	390	391	390	391	392	393	394	395	395
2007-2008		396	396	397	398	400	400	401	403	404	405	409	411
2008-2009		413	418	423	425	428	429	432	434	437	439	443	447
<u>IV-Miscellaneous</u>	11.87												
2006-2007		393	395	397	400	402	404	404	405	406	407	409	411
2007-2008		414	416	418	421	423	424	427	429	431	434	436	439
2008-2009		443	446	449	452	455	456	457	458	460	461	464	466
<u>General Index</u>	100.00												
2006-2007		374	376	381	387	391	391	391	393	393	395	396	400
2007-2008		404	408	410	413	414	413	414	417	423	429	431	435
2008-2009		442	450	455	459	460	459	461	462	464	468	475	484

Table 7.01

**STATE-WISE AND MONTH-WISE CONSUMER PRICE INDEX NUMBERS FOR AGRICULTURAL
LABOURERS FOR THE YEARS 2006-07 TO 2008-09 (BY GROUPS)**

STATE: ANDHRA PRADESH

(Base : 1986-87 = 100)

Group/Year	Weight	Month											
		Jul	Aug	Sep	Oct	Nov	Dec	Jan	Feb	Mar	Apr	May	Jun
1	2	3	4	5	6	7	8	9	10	11	12	13	14
<u>I-A-Food</u>	65.00												
2006-2007		388	393	399	404	410	411	412	415	411	412	415	427
2007-2008		431	432	431	434	437	436	434	438	445	453	457	462
2008-2009		472	486	498	507	505	503	504	502	501	505	516	531
<u>I-B-Pan, Supari,</u>	4.50												
<u>Tobacco &</u>													
<u>Intoxicants</u>													
2006-2007		401	404	403	407	410	417	418	431	431	437	440	447
2007-2008		452	454	457	462	467	470	469	475	475	483	496	501
2008-2009		519	533	545	553	561	567	579	584	586	588	590	605
<u>II-Fuel & Light</u>	7.00												
2006-2007		389	388	388	389	389	396	396	393	393	394	395	377
2007-2008		378	385	392	395	404	407	407	417	422	415	427	427
2008-2009		429	433	433	441	443	445	445	454	459	455	458	476
<u>III-Clothing,</u>	8.80												
<u>Bedding &</u>													
<u>Footwear</u>													
2006-2007		367	367	369	370	371	372	372	374	374	374	375	373
2007-2008		374	377	378	379	379	379	378	379	380	380	382	383
2008-2009		391	396	403	403	405	405	408	411	413	415	416	420
<u>IV-Miscellaneous</u>	14.70												
2006-2007		373	378	385	386	388	389	389	392	394	395	395	396
2007-2008		398	404	406	410	412	413	415	418	420	422	424	429
2008-2009		431	433	437	440	443	444	445	446	449	451	451	455
<u>General Index</u>	100.00												
2006-2007		385	389	394	397	402	403	404	407	405	406	408	415
2007-2008		418	421	421	424	427	427	426	430	435	441	445	450
2008-2009		458	468	478	486	486	484	486	486	486	489	497	509

Table 7.02

**STATE-WISE AND MONTH-WISE CONSUMER PRICE INDEX NUMBERS FOR AGRICULTURAL
LABOURERS FOR THE YEARS 2006-07 TO 2008-09 (BY GROUPS)**

STATE: ASSAM

(Base: 1986-87 = 100)

Group/Year	Weight	Month											
		Jul	Aug	Sep	Oct	Nov	Dec	Jan	Feb	Mar	Apr	May	Jun
1	2	3	4	5	6	7	8	9	10	11	12	13	14
<u>I-A-Food</u>	73.50												
2006-2007		356	358	365	375	376	371	369	372	381	376	381	389
2007-2008		395	400	407	413	414	408	400	402	408	415	417	425
2008-2009		434	440	441	448	451	449	448	444	447	452	463	482
<u>I-B-Pan, Supari, Tobacco & Intoxicants</u>	5.20												
2006-2007		428	429	424	431	426	427	427	442	477	481	474	463
2007-2008		464	466	467	469	468	470	472	480	485	488	489	483
2008-2009		481	497	497	495	496	497	499	503	502	505	510	517
<u>II-Fuel & Light</u>	8.90												
2006-2007		413	415	422	418	414	413	423	418	411	412	411	412
2007-2008		416	415	417	419	419	417	418	418	418	418	419	420
2008-2009		424	425	429	432	425	429	432	436	436	436	440	469
<u>III-Clothing, Bedding & Footwear</u>	5.90												
2006-2007		476	475	477	480	480	477	474	472	461	459	462	461
2007-2008		457	457	462	463	460	460	461	462	465	465	466	466
2008-2009		468	469	478	476	470	472	481	482	482	483	483	484
<u>IV-Miscellaneous</u>	6.50												
2006-2007		391	396	398	399	398	399	403	404	404	406	406	406
2007-2008		409	410	411	412	413	415	417	418	418	420	420	421
2008-2009		423	427	429	428	427	425	427	429	431	431	431	432
<u>General Index</u>	100.00												
2006-2007		374	376	382	389	389	386	385	388	395	391	395	400
2007-2008		405	409	414	419	420	416	410	412	417	423	424	430
2008-2009		437	442	444	449	450	449	450	448	450	454	462	480

Table 7.03

**STATE-WISE AND MONTH-WISE CONSUMER PRICE INDEX NUMBERS FOR AGRICULTURAL
LABOURERS FOR THE YEARS 2006-07 TO 2008-09 BY GROUPS)**

STATE: BIHAR

(Base: 1986-87 = 100)

Group/Year	Weight	Month											
		Jul	Aug	Sep	Oct	Nov	Dec	Jan	Feb	Mar	Apr	May	Jun
1	2	3	4	5	6	7	8	9	10	11	12	13	14
<u>I-A-Food</u>	76.10												
2006-2007		361	358	370	385	386	384	382	383	391	386	379	378
2007-2008		384	397	407	416	413	410	406	410	414	420	416	417
2008-2009		431	439	443	445	442	436	437	441	438	448	452	456
<u>I-B-Pan. Supari, Tobacco & Intoxicants</u>	2.60												
2006-2007		388	387	385	383	388	391	392	394	396	400	400	401
2007-2008		405	408	411	412	413	415	423	425	426	431	429	430
2008-2009		436	444	451	458	461	467	469	475	477	482	486	487
<u>II-Fuel & Light</u>	7.90												
2006-2007		388	388	393	402	401	396	398	398	400	404	405	402
2007-2008		411	413	409	410	410	415	418	420	423	426	429	437
2008-2009		453	458	461	464	469	470	482	503	510	507	507	509
<u>III-Clothing, Bedding & Footwear</u>	5.00												
2006-2007		406	406	407	408	410	410	412	413	412	413	411	413
2007-2008		415	414	415	416	416	417	419	417	417	418	419	422
2008-2009		425	426	428	432	434	435	436	438	441	443	445	450
<u>IV-Miscellaneous</u>	8.40												
2006-2007		388	389	392	397	402	405	403	403	405	406	403	407
2007-2008		405	409	407	407	411	413	421	425	428	429	430	432
2008-2009		434	433	434	436	440	445	448	454	456	458	466	467
<u>General Index</u>	100.00												
2006-2007		368	366	376	389	390	388	387	388	394	391	385	385
2007-2008		390	400	408	415	413	411	409	413	416	422	419	421
2008-2009		433	440	443	446	444	440	442	447	447	454	458	462

Table 7.04

**STATE-WISE AND MONTH-WISE CONSUMER PRICE INDEX NUMBERS FOR AGRICULTURAL
LABOURERS FOR THE YEARS 2006-07 TO 2008-09 (BY GROUPS)**

STATE: GUJARAT

(Base: 1986-87 = 100)

Group/Year	Weight	Month											
		Jul	Aug	Sep	Oct	Nov	Dec	Jan	Feb	Mar	Apr	May	Jun
1	2	3	4	5	6	7	8	9	10	11	12	13	14
<u>I-A-Food</u>	68.50												
2006-2007		394	400	408	415	418	416	414	417	419	424	424	426
2007-2008		432	436	437	441	436	430	426	429	433	436	435	440
2008-2009		446	457	460	463	466	460	464	467	473	477	488	501
<u>I-B-Pan, Supari, Tobacco & Intoxicants</u>	3.60												
2006-2007		423	426	427	426	431	438	441	442	443	467	480	496
2007-2008		502	518	519	521	524	527	533	534	534	533	539	539
2008-2009		545	556	558	566	577	579	587	587	590	597	599	607
<u>II-Fuel & Light</u>	8.20												
2006-2007		288	289	292	292	291	310	311	310	326	326	325	328
2007-2008		328	335	344	343	345	344	341	346	347	339	346	359
2008-2009		366	372	383	394	396	410	414	423	424	423	428	429
<u>III-Clothing, Bedding & Footwear</u>	6.50												
2006-2007		350	351	350	352	348	354	355	356	363	353	355	354
2007-2008		352	353	351	348	349	349	352	354	355	357	357	360
2008-2009		362	362	364	364	365	363	371	371	368	369	369	374
<u>IV-Miscellaneous</u>	13.20												
2006-2007		399	402	402	405	413	414	414	415	416	419	420	421
2007-2008		422	424	427	427	428	428	431	431	432	435	437	438
2008-2009		449	453	452	457	458	464	461	459	458	458	460	466
<u>General Index</u>	100.00												
2006-2007		384	389	395	400	403	404	403	405	408	412	413	415
2007-2008		419	423	425	428	425	421	419	422	425	426	427	431
2008-2009		438	447	450	454	457	454	458	460	464	468	476	486

Table 7.05

**STATE-WISE AND MONTH-WISE CONSUMER PRICE INDEX NUMBERS FOR AGRICULTURAL
LABOURERS FOR THE YEARS 2006 - 07 TO 2008 - 09 (BY GROUPS)**

STATE: HARYANA

(Base: 1986-87 = 100)

Group/Year	Weight	Month											
		Jul	Aug	Sep	Oct	Nov	Dec	Jan	Feb	Mar	Apr	May	Jun
1	2	3	4	5	6	7	8	9	10	11	12	13	14
<u>I-A-Food</u>	64.50												
2006-2007		402	408	415	420	425	423	421	422	426	429	428	442
2007-2008		448	456	466	472	465	460	462	471	487	490	487	495
2008-2009		504	515	523	527	529	526	527	535	538	545	560	569
<u>I-B-Pan, Supari, Tobacco & Intoxicants</u>	3.60												
2006-2007		365	364	366	368	374	375	373	368	378	381	396	384
2007-2008		391	393	396	394	394	399	399	404	400	405	410	409
2008-2009		411	421	420	420	420	425	429	427	425	436	437	437
<u>II-Fuel & Light</u>	7.90												
2006-2007		411	404	404	419	422	430	429	422	421	430	451	451
2007-2008		451	459	478	495	493	493	493	493	493	493	507	511
2008-2009		511	527	527	530	536	550	562	569	569	569	569	570
<u>III-Clothing, Bedding & Footwear</u>	8.40												
2006-2007		360	360	360	369	370	370	370	370	371	370	379	371
2007-2008		377	372	375	377	380	381	381	383	385	385	385	385
2008-2009		394	395	401	402	406	405	405	405	405	405	406	413
<u>IV-Miscellaneous</u>	15.60												
2006-2007		336	338	338	339	339	340	342	344	344	350	355	356
2007-2008		357	362	368	372	372	374	374	375	378	379	381	384
2008-2009		391	392	395	394	395	395	395	396	396	397	399	399
<u>General Index</u>	100.00												
2006-2007		387	391	396	401	405	404	403	404	406	410	413	421
2007-2008		426	432	442	447	443	441	441	448	459	461	460	467
2008-2009		475	483	489	492	495	494	495	501	503	508	518	525

Table 7.06

**STATE-WISE AND MONTH-WISE CONSUMER PRICE INDEX NUMBERS FOR AGRICULTURAL
LABOURERS FOR THE YEARS 2006 – 07 TO 2008 - 09 (BY GROUPS)**

STATE: HIMACHAL PRADESH

(Base: 1986-87=100)

Group/Year	Weight	Month											
		Jul	Aug	Sep	Oct	Nov	Dec	Jan	Feb	Mar	Apr	May	Jun
1	2	3	4	5	6	7	8	9	10	11	12	13	14
<u>I-A-Food</u>	65.00												
2006-2007		361	365	375	383	387	383	383	386	381	387	383	376
2007-2008		384	389	397	406	401	387	378	381	380	388	383	390
2008-2009		401	409	424	426	428	418	421	415	415	419	425	435
<u>I-B-Pan, Supari, Tobacco & Intoxicants</u>	2.60												
2006-2007		454	455	455	455	464	464	464	465	471	473	483	469
2007-2008		466	474	478	478	476	477	477	474	471	493	494	499
2008-2009		498	519	521	522	522	520	520	520	519	521	532	587
<u>II-Fuel & Light</u>	11.00												
2006-2007		228	228	228	228	228	228	228	228	228	228	233	232
2007-2008		231	231	231	231	236	227	227	229	228	228	228	237
2008-2009		240	256	256	269	275	275	275	275	275	275	275	275
<u>III-Clothing, Bedding & Footwear</u>	9.00												
2006-2007		336	330	330	331	331	333	335	336	337	338	338	337
2007-2008		338	342	343	342	343	344	346	336	336	337	340	344
2008-2009		350	350	358	361	362	362	367	367	368	357	358	359
<u>IV-Miscellaneous</u>	12.40												
2006-2007		422	424	425	425	424	427	434	437	437	437	438	440
2007-2008		437	433	434	435	442	443	444	444	451	460	462	467
2008-2009		466	467	468	469	452	453	465	471	477	473	476	475
<u>General Index</u>	100.00												
2006-2007		354	356	363	368	371	369	370	373	370	373	372	367
2007-2008		372	375	380	387	384	375	369	370	370	377	375	381
2008-2009		390	397	407	410	411	404	408	405	406	407	412	419

Table 7.07

**STATE-WISE AND MONTH-WISE CONSUMER PRICE INDEX NUMBERS FOR AGRICULTURAL
LABOURERS FOR THE YEARS 2006 - 07 TO 2008 - 09 (BY GROUPS)**

STATE: JAMMU & KASHMIR

(Base: 1986-87 = 100)

Group/Year	Weight	Month											
		Jul	Aug	Sep	Oct	Nov	Dec	Jan	Feb	Mar	Apr	May	Jun
1	2	3	4	5	6	7	8	9	10	11	12	13	14
<u>I-A-Food</u>	71.40												
2006-2007		385	389	394	397	401	401	400	403	408	409	411	412
2007-2008		414	416	422	426	424	419	420	427	431	433	434	435
2008-2009		441	443	456	461	468	470	472	476	482	490	500	498
<u>I-B-Pan, Supari, Tobacco & Intoxicants</u>	1.40												
2006-2007		423	427	428	438	441	443	442	442	442	471	473	476
2007-2008		485	485	485	484	484	484	484	485	487	504	504	504
2008-2009		504	504	516	517	524	527	530	531	532	536	537	537
<u>II-Fuel & Light</u>	9.50												
2006-2007		252	252	252	252	263	270	272	272	272	272	272	275
2007-2008		277	278	278	278	278	272	285	285	283	283	283	286
2008-2009		304	304	304	304	306	307	316	316	315	316	315	320
<u>III-Clothing, Bedding & Footwear</u>	10.00												
2006-2007		384	383	386	388	391	405	412	415	417	420	420	419
2007-2008		408	406	407	411	413	415	409	410	411	410	410	414
2008-2009		416	416	413	415	417	422	421	422	423	422	417	417
<u>IV-Miscellaneous</u>	7.70												
2006-2007		423	425	428	437	436	437	441	439	439	440	440	440
2007-2008		439	441	442	446	446	445	448	449	451	454	457	471
2008-2009		473	473	479	486	490	495	499	498	500	500	503	503
<u>General Index</u>	100.00												
2006-2007		376	379	383	386	390	392	393	395	399	400	402	403
2007-2008		403	405	409	413	412	408	409	414	418	419	420	423
2008-2009		429	430	440	444	450	452	455	458	462	468	475	474

Table 7.08

**STATE-WISE AND MONTH-WISE CONSUMER PRICE INDEX NUMBERS FOR AGRICULTURAL
LABOURERS FOR THE YEARS 2006 - 07 TO 2008 - 09 (BY GROUPS)**

STATE: KARNATAKA

(Base: 1986-87 = 100)

Group/Year	Weight	Month											
		Jul	Aug	Sep	Oct	Nov	Dec	Jan	Feb	Mar	Apr	May	Jun
1	2	3	4	5	6	7	8	9	10	11	12	13	14
<u>I-A-Food</u>	65.90												
2006-2007		340	339	344	349	356	359	364	367	365	371	378	386
2007-2008		394	398	396	396	400	400	400	401	405	416	420	425
2008-2009		433	444	454	462	471	468	474	470	469	469	483	487
<u>I-B-Pan. Supari, Tobacco & Intoxicants</u>	4.80												
2006-2007		411	417	423	437	434	434	440	444	445	451	455	460
2007-2008		484	490	493	495	500	512	522	527	543	557	555	557
2008-2009		544	551	570	584	606	618	633	639	647	643	652	645
<u>II-Fuel & Light</u>	9.90												
2006-2007		337	343	346	349	352	354	354	357	368	368	369	369
2007-2008		369	373	373	374	374	365	369	369	369	369	369	370
2008-2009		368	372	373	377	379	380	381	381	383	391	391	392
<u>III-Clothing, Bedding & Footwear</u>	7.20												
2006-2007		357	358	359	359	360	361	361	360	362	364	365	365
2007-2008		362	362	365	366	367	370	370	370	372	373	378	379
2008-2009		370	374	377	384	384	385	386	386	390	391	401	402
<u>IV-Miscellaneous</u>	12.20												
2006-2007		387	388	388	390	391	394	394	394	394	396	399	400
2007-2008		404	408	409	412	415	425	430	431	435	440	441	442
2008-2009		446	448	456	459	463	465	466	466	469	470	480	480
<u>General Index</u>	100.00												
2006-2007		350	351	354	359	364	367	370	373	373	377	383	388
2007-2008		395	399	398	398	402	402	404	405	409	418	421	425
2008-2009		429	437	446	454	461	460	465	463	463	464	476	478

Table 7.09

**STATE-WISE AND MONTH-WISE CONSUMER PRICE INDEX NUMBERS FOR AGRICULTURAL
LABOURERS FOR THE YEARS 2006 - 07 TO 2008 - 09 (BY GROUPS)**

STATE: KERALA

(Base: 1986-87 = 100)

Group/Year	Weight	Month											
		Jul	Aug	Sep	Oct	Nov	Dec	Jan	Feb	Mar	Apr	May	Jun
1	2	3	4	5	6	7	8	9	10	11	12	13	14
<u>I-A-Food</u>	68.00												
2006-2007		358	357	354	355	364	367	369	369	365	364	369	374
2007-2008		374	377	377	377	384	391	396	397	405	416	423	425
2008-2009		427	431	439	449	457	460	463	458	453	456	460	468
<u>I-B-Pan, Supari, Tobacco & Intoxicants</u>	4.10												
2006-2007		464	467	469	470	471	476	489	499	490	500	509	515
2007-2008		529	537	534	439	540	543	537	536	539	546	550	559
2008-2009		583	588	595	592	597	607	629	638	632	634	627	634
<u>II-Fuel & Light</u>	7.05												
2006-2007		351	350	351	351	353	362	362	362	360	360	364	364
2007-2008		370	367	372	372	372	372	381	384	386	386	388	391
2008-2009		400	401	401	409	418	424	426	438	440	440	448	453
<u>III-Clothing, Bedding & Footwear</u>	5.14												
2006-2007		366	367	369	370	373	372	375	377	379	382	381	383
2007-2008		387	374	376	376	384	387	387	387	386	388	389	392
2008-2009		389	393	400	401	403	402	404	407	411	412	424	421
<u>IV-Miscellaneous</u>	15.71												
2006-2007		388	390	392	393	395	397	398	398	397	401	403	409
2007-2008		411	412	412	413	412	413	421	421	425	427	429	431
2008-2009		440	446	448	447	450	451	454	451	451	454	456	453
<u>General Index</u>	100.00												
2006-2007		367	367	366	366	373	376	378	379	376	376	380	385
2007-2008		387	388	388	389	394	399	404	405	411	420	425	427
2008-2009		432	436	442	450	456	459	463	460	457	460	463	469

Table 7.10

**STATE-WISE AND MONTH-WISE CONSUMER PRICE INDEX NUMBERS FOR AGRICULTURAL
LABOURERS FOR THE YEARS 2006 - 07 TO 2008 - 09 (BY GROUPS)**

STATE: MADHYA PRADESH

(Base: 1986-87=100)

Group/Year	Weight	Month											
		Jul	Aug	Sep	Oct	Nov	Dec	Jan	Feb	Mar	Apr	May	Jun
1	2	3	4	5	6	7	8	9	10	11	12	13	14
<u>I-A-Food</u>	72.50												
2005-2006		379	382	389	395	402	399	396	398	396	397	398	404
2006-2007		412	412	409	412	415	419	414	414	426	437	437	442
2008-2009		454	460	463	465	465	465	468	473	475	479	495	512
<u>I-B-Pan, Supari, Tobacco & Intoxicants</u>	3.40												
2005-2006		412	412	412	415	421	422	425	428	428	435	443	444
2006-2007		455	459	461	462	463	464	465	469	473	474	478	486
2008-2009		493	500	495	495	495	501	514	517	517	519	543	550
<u>II-Fuel & Light</u>	8.10												
2005-2006		351	354	352	352	354	356	359	354	354	354	355	355
2006-2007		354	358	360	360	360	360	360	389	389	389	387	387
2008-2009		387	388	395	398	398	401	406	409	418	421	429	430
<u>III-Clothing, Bedding & Footwear</u>	6.80												
2005-2006		356	357	360	361	361	363	363	364	363	364	366	367
2006-2007		356	356	357	358	359	358	360	367	368	368	370	370
2008-2009		372	383	390	390	391	391	392	393	398	398	407	413
<u>IV-Miscellaneous</u>	9.20												
2005-2006		354	357	359	364	366	370	370	372	375	379	378	378
2006-2007		381	381	387	394	394	394	394	398	399	399	401	402
2008-2009		405	410	416	418	417	419	425	426	427	427	431	421
<u>General Index</u>	100.00												
2005-2006		374	377	382	387	392	391	390	391	390	391	392	397
2006-2007		402	403	401	405	407	409	406	409	418	426	427	430
2008-2009		440	446	450	451	451	452	455	459	462	466	480	491

Table 7.11

**STATE-WISE AND MONTH-WISE CONSUMER PRICE INDEX NUMBERS FOR AGRICULTURAL
LABOURERS FOR THE YEARS 2006 - 07 TO 2008 - 09 (BY GROUPS)**

STATE: MAHARASHTRA

(Base: 1986-87=100)

Group/Year	Weight	Month											
		Jul	Aug	Sep	Oct	Nov	Dec	Jan	Feb	Mar	Apr	May	Jun
1	2	3	4	5	6	7	8	9	10	11	12	13	14
<u>I-A-Food</u>	65.06												
2006-2007		391	398	405	412	412	415	419	419	415	419	424	429
2007-2008		435	440	438	439	440	442	444	444	452	458	457	466
2008-2009		476	490	491	498	495	490	496	495	493	501	508	528
<u>I-B-Pan, Supari, Tobacco & Intoxicants</u>	3.49												
2006-2007		396	396	400	399	402	404	403	406	410	412	414	416
2007-2008		422	422	425	425	430	432	435	441	443	444	455	461
2008-2009		467	471	478	483	484	485	494	495	501	500	500	506
<u>II-Fuel & Light</u>	10.02												
2006-2007		374	375	376	376	378	386	393	394	393	396	396	397
2007-2008		397	403	403	401	407	409	412	415	416	415	417	418
2008-2009		420	421	428	428	428	427	425	427	429	428	428	436
<u>III-Clothing, Bedding & Footwear</u>	8.53												
2006-2007		333	333	334	337	340	338	338	338	341	341	341	340
2007-2008		344	344	347	346	345	347	351	352	353	353	356	356
2008-2009		365	369	370	376	377	378	375	376	377	379	382	391
<u>IV-Miscellaneous</u>	12.90												
2006-2007		396	397	399	399	401	398	400	401	402	403	404	405
2007-2008		411	414	416	426	428	429	430	433	436	441	443	447
2008-2009		450	454	458	462	464	465	465	467	468	469	472	473
<u>General Index</u>	100.00												
2006-2007		385	390	395	400	401	403	406	407	405	407	411	415
2007-2008		420	424	423	425	427	428	431	431	437	442	443	449
2008-2009		457	467	469	476	474	471	474	474	474	479	485	499

Table 7.12

**STATE-WISE AND MONTH-WISE CONSUMER PRICE INDEX NUMBERS FOR AGRICULTURAL
LABOURERS FOR THE YEARS 2006 - 07 TO 2008 - 09 (BY GROUPS)**

STATE: MANIPUR

(Base: 1986-87=100)

Group/Year	Weight	Month											
		Jul	Aug	Sep	Oct	Nov	Dec	Jan	Feb	Mar	Apr	May	Jun
1	2	3	4	5	6	7	8	9	10	11	12	13	14
<u>I-A-Food</u>	66.90												
2006-2007		314	314	315	314	313	315	312	310	313	326	331	336
2007-2008		347	343	341	342	345	340	343	344	347	351	357	358
2008-2009		363	367	375	378	381	380	384	387	389	393	401	415
<u>I-B-Pan, Supari, Tobacco & Intoxicants</u>	4.40												
2006-2007		406	408	409	412	411	409	406	406	409	416	446	457
2007-2008		465	464	465	475	476	477	482	482	484	491	493	493
2008-2009		496	508	512	522	528	524	519	519	526	523	523	523
<u>II-Fuel & Light</u>	6.60												
2006-2007		490	490	490	490	490	496	500	501	501	501	501	508
2007-2008		513	513	519	519	519	528	533	534	540	544	551	551
2008-2009		564	568	570	571	574	577	587	591	591	591	591	594
<u>III-Clothing, Bedding & Footwear</u>	12.30												
2006-2007		325	325	325	325	325	325	325	326	328	328	333	333
2007-2008		342	346	347	348	351	352	358	358	361	362	365	366
2008-2009		367	371	380	382	388	395	396	397	401	404	404	404
<u>IV-Miscellaneous</u>	9.80												
2006-2007		339	339	339	339	339	340	340	340	340	339	339	342
2007-2008		344	346	352	357	359	362	367	367	369	372	374	379
2008-2009		381	386	390	393	410	416	419	422	422	422	423	428
<u>General Index</u>	100.00												
2006-2007		333	333	335	333	333	335	333	332	334	343	348	353
2007-2008		362	360	360	362	364	362	366	366	370	373	378	380
2008-2009		385	389	396	399	404	405	409	411	413	416	421	432

Table 7.13

**STATE-WISE AND MONTH-WISE CONSUMER PRICE INDEX NUMBERS FOR AGRICULTURAL
LABOURERS FOR THE YEARS 2006 - 07 TO 2008 - 09 (BY GROUPS)**

STATE: MEGHALAYA

(Base: 1986-87=100)

Group/Year	Weight	Month											
		Jul	Aug	Sep	Oct	Nov	Dec	Jan	Feb	Mar	Apr	May	Jun
1	2	3	4	5	6	7	8	9	10	11	12	13	14
<u>I-A-Food</u>	73.00												
2006-2007		385	391	394	396	400	401	400	402	401	406	411	416
2007-2008		412	422	432	437	442	435	436	431	438	442	450	453
2008-2009		470	477	485	486	489	491	494	493	499	508	519	526
<u>I-B-Pan, Supari,</u>	8.80												
<u>Tobacco &</u>													
<u>Intoxicants</u>													
2006-2007		421	420	423	419	414	417	423	429	424	417	419	417
2007-2008		427	422	429	431	429	430	431	431	430	432	437	440
2008-2009		440	440	441	440	441	443	443	448	451	469	462	457
<u>II-Fuel & Light</u>	8.20												
2006-2007		413	412	422	424	428	428	428	428	428	425	421	423
2007-2008		413	413	413	413	418	418	421	418	418	418	411	412
2008-2009		409	412	409	409	413	411	411	412	413	416	413	419
<u>III-Clothing,</u>	1.90												
<u>Bedding &</u>													
<u>Footwear</u>													
2006-2007		442	442	442	434	437	443	441	446	446	455	455	455
2007-2008		454	457	457	459	456	459	459	461	461	463	462	465
2008-2009		459	456	450	451	469	472	475	477	478	484	488	486
<u>IV-Miscellaneous</u>	8.10												
2006-2007		455	463	458	456	462	462	468	477	478	470	472	472
2007-2008		482	478	482	482	486	486	487	492	494	495	498	495
2008-2009		493	498	494	495	497	498	498	507	507	507	531	530
<u>General Index</u>	100.00												
2006-2007		398	402	405	406	409	410	411	413	412	415	418	422
2007-2008		420	426	435	439	443	438	439	435	441	444	450	452
2008-2009		464	470	475	476	479	480	483	483	488	496	506	511

Table 7.14

**STATE-WISE AND MONTH-WISE CONSUMER PRICE INDEX NUMBERS FOR AGRICULTURAL
LABOURERS FOR THE YEARS 2006 - 07 TO 2008 - 09 (BY GROUPS)**

STATE: ORISSA

(Base:1986-87=100)

Group/Year	Weight	Month											
		Jul	Aug	Sep	Oct	Nov	Dec	Jan	Feb	Mar	Apr	May	Jun
1	2	3	4	5	6	7	8	9	10	11	12	13	14
<u>I-A-Food</u>	78.20												
2006-2007		329	339	345	356	359	354	353	352	352	359	357	364
2007-2008		374	382	387	395	391	389	382	386	390	399	405	412
2008-2009		424	429	430	433	427	423	420	418	428	436	446	457
<u>I-B-Pan. Supari, Tobacco & Intoxicants</u>	2.00												
2006-2007		402	397	404	403	403	408	421	425	429	429	430	430
2007-2008		423	428	442	447	460	478	491	525	523	501	499	504
2008-2009		517	519	523	541	543	556	567	569	572	572	581	598
<u>II-Fuel & Light</u>	8.70												
2006-2007		407	410	410	410	412	415	415	415	419	419	419	419
2007-2008		423	427	416	416	415	419	420	430	433	437	437	438
2008-2009		439	442	453	463	463	468	471	472	476	476	477	477
<u>III-Clothing, Bedding & Footwear</u>	5.10												
2006-2007		445	450	446	448	446	445	447	442	448	448	449	449
2007-2008		450	450	454	459	459	457	461	464	461	463	464	465
2008-2009		470	474	476	478	476	476	479	480	482	483	487	486
<u>IV-Miscellaneous</u>	6.00												
2006-2007		376	378	381	380	381	383	383	382	383	385	388	389
2007-2008		394	396	396	396	397	399	399	399	404	403	406	409
2008-2009		413	418	420	421	428	429	431	430	431	431	432	432
<u>General Index</u>	100.00												
2006-2007		346	355	359	367	371	367	367	365	366	372	370	376
2007-2008		385	391	395	401	398	398	392	397	401	408	413	419
2008-2009		429	433	435	439	435	433	431	430	438	444	452	462

Table 7.15

**STATE-WISE AND MONTH-WISE CONSUMER PRICE INDEX NUMBERS FOR AGRICULTURAL
LABOURERS FOR THE YEARS 2006 - 07 TO 2008 - 09 (BY GROUPS)**

STATE: PUNJAB

(Base: 1986-87=100)

Group/Year	Weight	Month											
		Jul	Aug	Sep	Oct	Nov	Dec	Jan	Feb	Mar	Apr	May	Jun
1	2	3	4	5	6	7	8	9	10	11	12	13	14
<u>I-A-Food</u>	62.30												
2006-2007		414	420	427	436	443	444	442	443	439	442	436	441
2007-2008		443	448	464	460	450	442	443	454	468	482	481	490
2008-2009		503	517	524	521	524	517	518	522	525	532	556	562
<u>I-B-Pan, Supari, Tobacco & Intoxicants</u>	2.60												
2006-2007		411	408	408	437	437	438	438	438	443	450	424	428
2007-2008		427	430	430	433	433	435	435	435	430	452	455	457
2008-2009		464	463	475	479	504	505	505	514	510	510	522	510
<u>II-Fuel & Light</u>	8.30												
2006-2007		423	423	424	423	426	436	459	459	464	499	509	515
2007-2008		514	532	532	543	543	551	552	565	572	581	586	583
2008-2009		583	590	595	599	599	600	601	590	592	592	594	616
<u>III-Clothing, Bedding & Footwear</u>	10.90												
2006-2007		341	346	348	341	344	346	347	348	350	349	352	357
2007-2008		358	362	362	366	365	364	365	366	365	367	368	373
2008-2009		373	378	386	391	400	400	402	408	410	412	417	417
<u>IV-Miscellaneous</u>	15.90												
2006-2007		356	361	363	365	365	370	371	374	375	376	378	388
2007-2008		395	395	394	397	397	398	399	402	405	406	407	409
2008-2009		412	419	420	422	422	421	420	421	425	425	433	433
<u>General Index</u>	100.00												
2006-2007		398	402	408	413	418	421	421	423	421	426	423	429
2007-2008		432	437	446	446	439	435	436	445	454	465	465	472
2008-2009		480	491	497	497	500	496	496	499	502	507	523	529

Table 7.16

**STATE-WISE AND MONTH-WISE CONSUMER PRICE INDEX NUMBERS FOR AGRICULTURAL
LABOURERS FOR THE YEARS 2006 - 07 TO 2008 - 09 (BY GROUPS)**

STATE: RAJASTHAN

(Base:1986-87=100)

Group/Year	Weight	Month											
		Jul	Aug	Sep	Oct	Nov	Dec	Jan	Feb	Mar	Apr	May	Jun
1	2	3	4	5	6	7	8	9	10	11	12	13	14
<u>I-A-Food</u>	62.70												
2006-2007		397	405	410	411	415	415	423	429	431	433	426	422
2007-2008		429	430	430	431	429	426	429	433	444	447	449	455
2008-2009		470	475	479	485	484	479	487	493	498	505	523	534
<u>I-B-Pan, Supari, Tobacco & Intoxicants</u>	3.80												
2006-2007		424	426	424	427	428	429	427	431	437	452	477	483
2007-2008		495	495	495	509	509	532	523	522	521	520	534	533
2008-2009		543	551	553	545	545	555	564	567	568	569	577	588
<u>II-Fuel & Light</u>	7.80												
2006-2007		398	402	408	408	412	420	428	428	427	441	446	433
2007-2008		435	435	435	448	448	464	477	477	477	477	477	477
2008-2009		488	488	488	488	496	505	506	513	534	534	538	542
<u>III-Clothing, Bedding & Footwear</u>	11.40												
2006-2007		392	396	407	404	406	410	411	412	413	415	418	422
2007-2008		422	423	425	426	427	433	437	439	437	438	440	446
2008-2009		448	456	462	458	460	465	471	472	476	476	477	479
<u>IV-Miscellaneous</u>	14.30												
2006-2007		374	373	370	381	381	384	384	391	392	392	392	400
2007-2008		407	414	414	425	425	426	430	430	430	441	445	445
2008-2009		447	450	451	475	474	475	473	471	474	475	477	481
<u>General Index</u>	100.00												
2006-2007		394	400	404	407	409	411	416	422	423	426	424	422
2007-2008		428	430	430	434	433	434	437	440	447	450	453	457
2008-2009		468	473	477	483	483	482	488	492	497	502	515	523

Table 7.17

**STATE-WISE AND MONTH-WISE CONSUMER PRICE INDEX NUMBERS FOR AGRICULTURAL
LABOURERS FOR THE YEARS 2005 - 06 TO 2007 - 08 (BY GROUPS)**

STATE: TAMIL NADU

(Base 1986-87=100)

Group/Year	Weight	Month											
		Jul	Aug	Sep	Oct	Nov	Dec	Jan	Feb	Mar	Apr	May	Jun
1	2	3	4	5	6	7	8	9	10	11	12	13	14
<u>I-A-Food</u>	69.10												
2006-2007		323	322	325	327	333	339	342	344	341	343	347	352
2007-2008		355	354	353	353	359	363	366	373	380	385	392	391
2008-2009		398	407	418	421	426	430	431	431	426	424	430	441
<u>I-B-Pan, Supari, Tobacco & Intoxicants</u>	4.40												
2006-2007		485	501	505	512	513	518	540	549	538	532	535	560
2007-2008		550	547	553	558	560	573	580	565	561	582	587	618
2008-2009		612	601	621	628	633	636	651	638	655	668	686	700
<u>II-Fuel & Light</u>	8.20												
2006-2007		413	419	421	425	419	422	422	434	435	453	461	464
2007-2008		464	467	474	473	474	478	478	494	499	507	513	522
2008-2009		521	524	525	529	540	551	555	573	575	573	578	584
<u>III-Clothing, Bedding & Footwear</u>	5.80												
2006-2007		365	361	362	364	365	364	366	367	370	371	370	364
2007-2008		369	369	371	372	373	371	374	374	378	380	380	381
2008-2009		375	378	379	381	384	386	387	384	387	387	386	395
<u>IV-Miscellaneous</u>	12.50												
2006-2007		461	461	463	466	468	470	472	472	473	474	476	477
2007-2008		477	480	485	487	490	488	493	493	495	500	505	506
2008-2009		513	516	518	522	526	526	529	534	537	538	541	548
<u>General Index</u>	100.00												
2006-2007		357	358	360	363	367	371	375	378	375	379	382	386
2007-2008		388	388	389	390	395	398	401	406	412	418	423	425
2008-2009		431	437	446	449	454	458	461	462	460	459	465	474

Table 7.18

**STATE-WISE AND MONTH-WISE CONSUMER PRICE INDEX NUMBERS FOR AGRICULTURAL
LABOURERS FOR THE YEARS 2006 - 07 TO 2008 - 09 (BY GROUPS)**

STATE: TRIPURA

(Base: 1986-87=100)

Group/Year	Weight	Month											
		Jul	Aug	Sep	Oct	Nov	Dec	Jan	Feb	Mar	Apr	May	Jun
1	2	3	4	5	6	7	8	9	10	11	12	13	14
<u>I-A-Food</u>	68.20												
2006-2007		362	363	366	377	369	361	355	360	367	369	372	381
2007-2008		380	389	404	412	405	407	393	384	391	403	402	406
2008-2009		412	421	424	429	438	434	432	431	437	441	444	449
<u>I-B-Pan, Supari, Tobacco & Intoxicants</u>	3.20												
2006-2007		470	429	430	440	442	442	452	453	461	471	470	461
2007-2008		461	442	437	436	443	459	462	471	482	475	479	477
2008-2009		473	473	470	468	459	457	464	468	474	481	483	481
<u>II-Fuel & Light</u>	5.70												
2006-2007		264	272	275	285	287	289	290	290	290	290	290	290
2007-2008		290	288	288	288	288	288	288	288	288	288	288	288
2008-2009		288	290	293	293	299	314	320	323	331	334	343	344
<u>III-Clothing, Bedding & Footwear</u>	10.40												
2006-2007		485	485	498	508	504	508	509	509	509	509	506	505
2007-2008		507	506	505	505	505	504	504	502	496	486	484	483
2008-2009		483	483	483	483	485	485	483	482	482	482	482	481
<u>IV-Miscellaneous</u>	12.50												
2006-2007		378	384	390	391	403	403	403	403	408	409	409	409
2007-2008		410	410	415	415	415	415	420	429	429	429	429	430
2008-2009		433	434	435	436	438	437	439	439	439	440	447	447
<u>General Index</u>	100.00												
2006-2007		374	375	380	389	385	380	377	380	386	387	389	395
2007-2008		394	400	410	416	411	413	404	399	404	410	410	413
2008-2009		417	423	425	429	435	434	433	432	437	440	444	447

Table 7.19

**STATE-WISE AND MONTH-WISE CONSUMER PRICE INDEX NUMBERS FOR AGRICULTURAL
LABOURERS FOR THE YEARS 2006 - 07 TO 2008 - 09 (BY GROUPS)**

STATE: UTTAR PRADESH

(Base: 1986-87=100)

Group/Year	Weight	Month											
		Jul	Aug	Sep	Oct	Nov	Dec	Jan	Feb	Mar	Apr	May	Jun
1	2	3	4	5	6	7	8	9	10	11	12	13	14
<u>I-A-Food</u>	66.30												
2006-2007		395	396	409	418	430	424	425	423	427	429	425	427
2007-2008		434	442	443	440	437	429	428	439	453	459	454	456
2008-2009		468	474	477	472	470	463	467	470	476	487	494	504
<u>I-B-Pan, Supari, Tobacco & Intoxicants</u>	2.80												
2006-2007		430	432	432	433	435	437	441	435	437	438	440	447
2007-2008		475	483	487	493	495	508	509	512	513	520	521	521
2008-2009		525	527	527	536	540	541	541	542	547	551	554	560
<u>II-Fuel & Light</u>	9.40												
2006-2007		334	334	331	333	355	361	357	356	359	360	377	379
2007-2008		375	376	380	380	382	393	398	401	396	424	426	434
2008-2009		442	453	458	457	461	468	474	470	468	473	472	474
<u>III-Clothing, Bedding & Footwear</u>	8.20												
2006-2007		374	380	380	381	388	383	387	390	390	394	391	391
2007-2008		391	390	391	392	395	387	389	390	392	394	409	412
2008-2009		407	416	429	434	440	436	439	439	444	452	453	456
<u>IV-Miscellaneous</u>	13.30												
2006-2007		390	392	393	395	397	403	403	404	403	403	410	413
2007-2008		412	415	416	418	419	421	423	423	425	425	426	434
2008-2009		437	438	438	440	441	432	436	434	434	435	439	440
<u>General Index</u>	100.00												
2006-2007		388	390	398	405	416	412	413	412	415	417	416	418
2007-2008		423	429	431	429	428	424	423	431	441	447	446	449
2008-2009		458	464	467	465	465	459	463	464	469	477	483	490

Table 7.20

**STATE-WISE AND MONTH-WISE CONSUMER PRICE INDEX NUMBERS FOR AGRICULTURAL
LABOURERS FOR THE YEARS 2006 - 07 TO 2007-09 (BY GROUPS)**

STATE: WEST BENGAL

(Base: 1986-87=100)

Group/Year	Weight	Month											
		Jul	Aug	Sep	Oct	Nov	Dec	Jan	Feb	Mar	Apr	May	Jun
1	2	3	4	5	6	7	8	9	10	11	12	13	14
<u>I-A-Food</u>	77.70												
2006-2007		333	331	340	348	348	346	342	339	342	344	349	351
2007-2008		356	365	374	381	382	376	374	379	389	398	396	398
2008-2009		403	412	416	421	420	417	414	414	412	419	427	432
<u>I-B-Pan, Supari,</u>	3.10												
<u>Tobacco &</u>													
<u>Intoxicants</u>													
2006-2007		408	408	411	421	426	432	430	430	432	431	431	432
2007-2008		432	426	426	427	427	428	448	432	436	439	437	446
2008-2009		446	475	477	478	501	499	501	500	517	517	519	523
<u>II-Fuel & Light</u>	7.50												
2006-2007		386	386	390	390	393	389	390	391	388	390	390	389
2007-2008		389	393	391	397	398	398	403	401	407	408	409	413
2008-2009		413	422	437	438	446	448	448	451	455	464	469	472
<u>III-Clothing,</u>	4.30												
<u>Bedding & Footwear</u>													
2006-2007		481	482	487	490	494	489	481	477	477	478	477	476
2007-2008		474	465	465	462	463	465	468	468	470	471	483	485
2008-2009		485	485	495	497	501	499	503	511	516	521	524	525
<u>IV-Miscellaneous</u>	7.40												
2006-2007		459	464	472	472	475	478	479	479	481	482	482	482
2007-2008		482	479	479	480	480	481	474	483	484	485	486	484
2008-2009		484	488	490	491	493	495	495	505	520	521	527	528
<u>General Index</u>	100.00												
2006-2007		355	354	362	369	370	368	364	362	365	366	370	371
2007-2008		375	381	389	394	396	391	390	394	402	410	409	411
2008-2009		415	423	428	432	433	431	429	430	431	437	445	449

Table 7.21

**STATE-WISE AND MONTH-WISE CONSUMER PRICE INDEX NUMBERS FOR
RURAL LABOURERS FOR THE YEARS 2006 - 07 TO 2008 - 09 (BY GROUPS)**

STATE: ANDHRA PRADESH

(Base: 1986-87=100)

Group/Year	Weight	Month											
		Jul	Aug	Sep	Oct	Nov	Dec	Jan	Feb	Mar	Apr	May	Jun
1	2	3	4	5	6	7	8	9	10	11	12	13	14
<u>I-A-Food</u>	63.10												
2006-2007		388	393	398	403	409	410	411	414	410	411	414	426
2007-2008		430	431	430	433	435	435	433	437	443	452	456	461
2008-2009		470	484	496	505	504	501	503	501	500	504	515	530
<u>I-B-Pan, Supari,</u>	4.50												
<u>Tobacco &</u>													
<u>Intoxicants</u>													
2006-2007		401	404	403	408	410	418	419	431	431	438	441	448
2007-2008		453	456	458	464	469	471	470	476	477	485	499	504
2008-2009		521	535	548	556	565	570	582	586	589	591	593	608
<u>II-Fuel & Light</u>	6.70												
2006-2007		386	385	385	387	386	394	394	391	390	392	393	375
2007-2008		376	383	390	393	401	404	404	414	419	413	424	425
2008-2009		427	430	430	439	442	443	444	452	456	453	456	473
<u>III-Clothing,</u>	11.30												
<u>Bedding &</u>													
<u>Footwear</u>													
2006-2007		377	378	379	380	381	381	382	384	384	384	385	384
2007-2008		385	387	388	389	389	389	389	389	390	390	392	393
2008-2009		398	402	409	409	411	411	413	416	418	420	421	426
<u>IV-Miscellaneous</u>	14.40												
2006-2007		373	378	385	386	388	389	389	392	393	395	395	395
2007-2008		398	404	406	410	412	412	415	417	420	422	424	428
2008-2009		431	433	437	440	443	444	445	446	449	451	451	454
<u>General Index</u>	100.00												
2006-2007		385	389	394	397	401	403	403	407	404	406	408	415
2007-2008		418	420	420	423	426	426	425	429	434	439	444	448
2008-2009		456	466	475	483	483	482	484	484	484	487	495	507

Table 7.22

**STATE-WISE AND MONTH-WISE CONSUMER PRICE INDEX NUMBERS FOR
RURAL LABOURERS FOR THE YEARS 2006 - 07 TO 2008 - 09 (BY GROUPS)**

STATE: ASSAM

(Base: 1986-87=100)

Group/Year	Weight	Month											
		Jul	Aug	Sep	Oct	Nov	Dec	Jan	Feb	Mar	Apr	May	Jun
1	2	3	4	5	6	7	8	9	10	11	12	13	14
<u>I-A-Food</u>	72.30												
2006-2007		360	363	370	380	381	377	374	376	386	380	387	394
2007-2008		400	405	413	419	420	414	405	407	413	420	422	430
2008-2009		438	445	446	453	456	455	454	450	454	459	470	488
<u>I-B-Pan, Supari, Tobacco & Intoxicants</u>	5.20												
2006-2007		421	422	417	425	419	421	422	438	474	478	471	457
2007-2008		458	460	462	463	461	463	464	473	479	482	482	475
2008-2009		474	489	488	487	488	488	490	493	492	495	500	506
<u>II-Fuel & Light</u>	9.60												
2006-2007		408	410	417	413	410	408	417	414	406	408	406	408
2007-2008		411	411	412	415	414	413	416	416	416	416	416	417
2008-2009		420	421	425	427	422	426	429	433	433	433	436	463
<u>III-Clothing, Bedding & Footwear</u>	5.60												
2006-2007		465	465	470	472	473	472	470	469	460	459	461	461
2007-2008		458	458	462	465	462	462	462	464	465	466	468	468
2008-2009		470	470	478	476	471	473	479	480	482	482	483	484
<u>IV-Miscellaneous</u>	7.30												
2006-2007		390	395	396	397	397	398	399	400	401	402	402	402
2007-2008		405	405	406	408	408	410	412	412	413	415	415	416
2008-2009		418	421	423	421	420	418	421	422	423	424	424	424
<u>General Index</u>	100.00												
2006-2007		376	378	384	392	392	389	388	390	397	394	399	403
2007-2008		408	412	417	423	423	419	413	415	419	425	426	432
2008-2009		439	445	446	452	453	452	452	450	453	457	465	482

Table 7.23

**STATE-WISE AND MONTH-WISE CONSUMER PRICE INDEX NUMBERS FOR
RURAL LABOURERS FOR THE YEARS 2006 – 07 TO 2008 - 09 (BY GROUPS)**

STATE: BIHAR**(Base: 1986-87=100)**

Group/Year	Weight	Month											
		Jul	Aug	Sep	Oct	Nov	Dec	Jan	Feb	Mar	Apr	May	Jun
1	2	3	4	5	6	7	8	9	10	11	12	13	14
<u>I-A-Food</u>	74.10												
2006-2007		360	357	370	385	385	382	381	381	389	385	378	377
2007-2008		383	395	406	415	411	408	405	408	413	419	415	416
2008-2009		430	439	442	444	441	435	436	440	437	447	451	456
<u>I-B-Pan, Supari,</u>	2.60												
<u>Tobacco &</u>													
<u>Intoxicants</u>													
2006-2007		392	391	388	387	391	394	395	397	399	402	403	404
2007-2008		407	411	415	415	417	418	426	428	429	434	432	433
2008-2009		438	447	453	466	462	468	470	476	478	483	487	488
<u>II-Fuel & Light</u>	7.60												
2006-2007		388	388	393	402	401	397	398	399	400	404	406	402
2007-2008		412	413	409	410	410	415	418	420	423	427	430	438
2008-2009		453	459	462	465	470	472	483	503	511	508	508	510
<u>III-Clothing,</u>	7.80												
<u>Bedding &</u>													
<u>Footwear</u>													
2006-2007		415	414	414	417	418	419	421	423	421	424	420	421
2007-2008		427	427	427	427	428	428	431	433	432	432	438	440
2008-2009		444	445	447	450	453	450	451	453	459	463	467	474
<u>IV-Miscellaneous</u>	7.90												
2006-2007		388	389	392	397	402	404	403	403	404	405	402	406
2007-2008		404	408	406	406	410	412	420	425	427	428	429	431
2008-2009		433	432	433	434	438	444	446	452	455	457	465	466
<u>General Index</u>	100.00												
2006-2007		369	367	377	389	390	388	387	388	394	391	386	385
2007-2008		391	400	408	415	413	411	409	413	417	422	419	421
2008-2009		433	440	444	446	444	441	443	447	447	454	458	463

Table 7.24

**STATE-WISE AND MONTH-WISE CONSUMER PRICE INDEX NUMBERS FOR
RURAL LABOURERS FOR THE YEARS 2006 - 07 TO 2008 - 09 (BY GROUPS)**

STATE: GUJARAT

(Base: 1986-87=100)

Group/Year	Weight	Month											
		Jul	Aug	Sep	Oct	Nov	Dec	Jan	Feb	Mar	Apr	May	Jun
1	2	3	4	5	6	7	8	9	10	11	12	13	14
<u>I-A-Food</u>	66.30												
2006-2007		394	400	408	415	418	416	414	418	419	424	424	426
2007-2008		433	437	437	442	437	431	427	430	434	437	436	441
2008-2009		447	457	460	463	467	461	465	468	474	478	489	502
<u>I-B-Pan, Supari, Tobacco & Intoxicants</u>	3.70												
2006-2007		421	423	425	424	428	436	438	439	440	463	475	491
2007-2008		497	512	513	515	517	520	525	526	526	525	532	532
2008-2009		536	546	548	557	567	569	579	579	582	589	593	601
<u>II-Fuel & Light</u>	7.80												
2006-2007		289	290	293	293	292	311	312	311	327	327	326	329
2007-2008		329	336	345	345	346	346	343	347	349	340	348	360
2008-2009		367	373	384	395	397	411	415	424	425	424	429	430
<u>III-Clothing, Bedding & Footwear</u>	9.90												
2006-2007		369	370	369	369	365	368	368	369	374	367	371	371
2007-2008		369	371	366	365	365	365	367	367	372	373	376	383
2008-2009		389	390	392	394	397	397	403	403	404	406	407	411
<u>IV-Miscellaneous</u>	12.30												
2006-2007		404	408	408	411	419	420	420	421	422	425	426	427
2007-2008		428	430	433	433	434	434	436	437	437	441	442	444
2008-2009		454	457	457	462	463	469	466	465	464	464	466	472
<u>General Index</u>	100.00												
2006-2007		386	390	396	400	403	404	403	406	409	412	413	416
2007-2008		420	424	425	429	425	422	419	422	425	427	428	433
2008-2009		439	447	450	454	458	455	460	462	466	469	477	488

Table 7.25

**STATE-WISE AND MONTH-WISE CONSUMER PRICE INDEX NUMBERS FOR
RURAL LABOURERS FOR THE YEARS 2006 - 07 TO 2008 - 09 (BY GROUPS)**

STATE: HARYANA

(Base: 1986-87=100)

Group/Year	Weight	Month											
		Jul	Aug	Sep	Oct	Nov	Dec	Jan	Feb	Mar	Apr	May	Jun
1	2	3	4	5	6	7	8	9	10	11	12	13	14
<u>I-A-Food</u>	60.40												
2006-2007		403	409	415	421	426	423	422	424	428	430	429	442
2007-2008		448	456	466	473	465	460	461	471	487	490	487	494
2008-2009		504	515	523	527	530	525	526	534	537	544	558	568
<u>I-B-Pan, Supari,</u>	3.30												
<u>Tobacco &</u>													
<u>Intoxicants</u>													
2006-2007		373	372	374	376	382	383	381	377	387	390	404	393
2007-2008		400	403	407	405	405	411	411	416	412	415	422	422
2008-2009		424	435	433	433	433	439	443	442	440	449	450	451
<u>II-Fuel & Light</u>	7.60												
2006-2007		413	406	406	421	424	432	431	424	423	431	453	453
2007-2008		453	461	480	496	495	495	495	495	495	495	508	513
2008-2009		513	528	529	531	538	551	563	570	570	571	570	571
<u>III-Clothing,</u>	13.90												
<u>Bedding &</u>													
<u>Footwear</u>													
2006-2007		373	373	373	378	379	379	380	380	381	377	383	375
2007-2008		383	377	379	384	387	388	388	390	393	393	394	394
2008-2009		405	404	414	415	418	417	417	417	417	419	422	434
<u>IV-Miscellaneous</u>	14.80												
2006-2007		341	346	346	345	346	346	348	351	351	354	359	361
2007-2008		362	367	373	377	377	379	379	381	383	384	386	390
2008-2009		396	397	399	399	399	400	400	400	401	401	402	402
<u>General Index</u>	100.00												
2006-2007		389	393	397	402	406	405	404	405	408	410	413	420
2007-2008		425	430	439	446	441	439	439	446	457	459	458	464
2008-2009		472	481	487	490	492	491	492	498	500	505	514	521

Table 7.26

**STATE-WISE AND MONTH-WISE CONSUMER PRICE INDEX NUMBERS FOR
RURAL LABOURERS FOR THE YEARS 2006 – 07 TO 2008 - 09 (BY GROUPS)**

STATE: HIMACHAL PRADESH

(Base: 1986-87=100)

Group/Year	Weight	Month											
		Jul	Aug	Sep	Oct	Nov	Dec	Jan	Feb	Mar	Apr	May	Jun
1	2	3	4	5	6	7	8	9	10	11	12	13	14
<u>I-A-Food</u>	65.80												
2006-2007		369	372	383	391	397	393	389	393	392	398	395	390
2007-2008		395	399	406	414	406	396	386	391	394	404	400	407
2008-2009		418	424	433	437	440	427	426	422	427	435	439	450
<u>I-B-Pan, Supari, Tobacco & Intoxicants</u>	3.60												
2006-2007		477	478	478	478	487	487	487	487	495	499	509	495
2007-2008		491	500	504	505	504	504	505	504	502	524	526	530
2008-2009		530	548	550	553	553	551	553	553	553	554	564	617
<u>II-Fuel & Light</u>	10.90												
2006-2007		232	232	232	232	232	232	232	232	232	232	237	236
2007-2008		235	235	235	235	241	233	233	235	234	234	234	242
2008-2009		245	264	264	278	286	286	286	285	285	285	285	285
<u>III-Clothing, Bedding & Footwear</u>	8.60												
2006-2007		383	373	373	374	374	376	379	380	382	383	383	386
2007-2008		388	394	396	393	394	395	396	384	384	385	389	393
2008-2009		400	403	413	416	414	414	419	419	419	407	408	409
<u>IV-Miscellaneous</u>	11.10												
2006-2007		401	402	403	404	403	406	412	412	413	413	416	419
2007-2008		417	414	415	417	423	421	421	418	434	443	445	448
2008-2009		447	449	450	451	437	438	448	459	464	458	461	460
<u>General Index</u>	100.00												
2006-2007		362	364	371	377	381	379	377	380	380	384	383	380
2007-2008		383	386	391	396	392	385	379	381	384	392	390	397
2008-2009		405	412	419	424	424	416	417	416	419	423	427	436

Table 7.27

**STATE-WISE AND MONTH-WISE CONSUMER PRICE INDEX NUMBERS FOR
RURAL LABOURERS FOR THE YEARS 2006 - 07 TO 2008 - 09 (BY GROUPS)**

STATE: JAMMU & KASHMIR

(Base: 1986-87=100)

Group/Year	Weight	Month											
		Jul	Aug	Sep	Oct	Nov	Dec	Jan	Feb	Mar	Apr	May	Jun
1	2	3	4	5	6	7	8	9	10	11	12	13	14
<u>I-A-Food</u>	70.10												
2006-2007		387	392	397	401	407	407	406	408	412	413	414	414
2007-2008		415	417	423	428	426	420	421	428	433	434	435	435
2008-2009		441	443	455	459	466	464	468	471	477	486	497	494
<u>I-B-Pan, Supari,</u>	1.90												
<u>Tobacco &</u>													
<u>Intoxicants</u>													
2006-2007		443	447	450	460	463	464	464	464	464	503	511	514
2007-2008		522	522	522	521	521	521	522	523	525	536	536	536
2008-2009		537	537	546	548	553	557	561	562	563	565	563	563
<u>II-Fuel & Light</u>	9.40												
2006-2007		250	250	250	250	262	268	270	270	270	270	270	272
2007-2008		274	275	275	275	275	270	283	283	281	281	281	284
2008-2009		302	302	302	302	305	305	314	314	313	314	312	318
<u>III-Clothing,</u>	10.10												
<u>Bedding &</u>													
<u>Footwear</u>													
2006-2007		374	374	376	382	381	388	393	395	395	401	403	402
2007-2008		396	392	393	397	399	402	395	399	399	398	398	404
2008-2009		407	407	406	408	411	413	410	413	414	414	413	413
<u>IV-Miscellaneous</u>	8.50												
2006-2007		419	421	423	434	434	435	437	433	434	435	436	436
2007-2008		435	436	440	447	447	446	451	452	454	457	461	471
2008-2009		473	474	480	485	488	493	496	495	496	496	499	499
<u>General Index</u>	100.00												
2006-2007		377	380	384	389	394	396	396	397	400	402	403	403
2007-2008		403	405	409	414	413	409	410	415	419	420	421	423
2008-2009		429	431	440	443	448	448	452	454	459	465	473	471

Table 7.28

**STATE-WISE AND MONTH-WISE CONSUMER PRICE INDEX NUMBERS FOR
RURAL LABOURERS FOR THE YEARS 2006 - 07 TO 2008 - 09 (BY GROUPS)**

STATE: KARNATAKA

(Base: 1986-87=100)

Group/Year	Weight	Month											
		Jul	Aug	Sep	Oct	Nov	Dec	Jan	Feb	Mar	Apr	May	Jun
1	2	3	4	5	6	7	8	9	10	11	12	13	14
<u>I-A-Food</u>	65.10												
2006-2007		338	338	342	347	353	357	361	365	364	369	377	384
2007-2008		393	397	395	394	399	398	398	399	402	414	418	423
2008-2009		432	442	452	461	470	466	473	469	469	470	482	486
<u>I-B-Pan, Supari, Tobacco & Intoxicants</u>	4.80												
2006-2007		407	414	420	433	431	431	437	442	441	446	452	456
2007-2008		484	491	494	496	500	513	523	529	544	558	556	557
2008-2009		545	553	571	585	608	620	634	639	647	643	652	645
<u>II-Fuel & Light</u>	9.50												
2006-2007		337	343	346	349	352	354	354	357	367	367	368	369
2007-2008		369	373	373	373	373	365	369	369	369	369	369	370
2008-2009		368	372	373	377	379	380	381	381	383	391	391	392
<u>III-Clothing, Bedding & Footwear</u>	9.50												
2006-2007		360	360	361	361	362	362	363	362	364	367	368	368
2007-2008		368	367	369	373	375	377	378	377	379	382	385	387
2008-2009		383	386	390	396	397	400	402	402	406	406	414	415
<u>IV-Miscellaneous</u>	11.10												
2006-2007		402	403	403	404	405	407	407	408	407	409	412	413
2007-2008		417	422	423	426	429	440	445	445	449	454	455	456
2008-2009		458	460	470	474	478	481	482	481	484	485	496	497
<u>General Index</u>	100.00												
2006-2007		350	351	355	359	364	366	370	372	373	377	383	388
2007-2008		395	399	398	398	403	403	405	405	409	418	421	425
2008-2009		430	437	446	454	462	460	466	464	465	466	477	479

Table 7.29

**STATE-WISE AND MONTH-WISE CONSUMER PRICE INDEX NUMBERS FOR
RURAL LABOURERS FOR THE YEARS 2006 - 07 TO 2008 - 09 (BY GROUPS)**

STATE: KERALA

(Base: 1986-87=100)

Group/Year	Weight	Month											
		Jul	Aug	Sep	Oct	Nov	Dec	Jan	Feb	Mar	Apr	May	Jun
1	2	3	4	5	6	7	8	9	10	11	12	13	14
<u>I-A-Food</u>	67.65												
2006-2007		362	362	359	360	369	372	373	373	369	368	372	377
2007-2008		377	378	378	378	384	392	396	398	405	416	423	425
2008-2009		427	431	440	450	458	461	464	459	454	457	461	470
<u>I-B-Pan, Supari,</u>	3.96												
<u>Tobacco &</u>													
<u>Intoxicants</u>													
2006-2007		461	464	466	469	469	474	485	495	487	499	508	514
2007-2008		527	535	532	536	538	541	534	534	537	543	548	556
2008-2009		582	586	594	591	594	605	627	636	630	632	627	633
<u>II-Fuel & Light</u>	6.95												
2006-2007		352	351	352	352	354	363	363	363	361	361	364	365
2007-2008		370	368	372	373	373	373	381	384	387	387	389	392
2008-2009		400	402	401	410	419	425	427	439	440	440	448	454
<u>III-Clothing,</u>	6.34												
<u>Bedding &</u>													
<u>Footwear</u>													
2006-2007		369	369	373	374	378	377	380	382	383	391	390	392
2007-2008		395	384	386	387	397	399	396	398	397	399	400	403
2008-2009		400	403	412	413	415	417	419	422	427	427	441	438
<u>IV-Miscellaneous</u>	15.10												
2006-2007		393	395	397	398	400	401	402	402	402	405	407	413
2007-2008		416	416	416	418	417	418	426	426	430	432	433	435
2008-2009		446	453	454	454	456	458	462	458	459	462	465	463
<u>General Index</u>	100.00												
2006-2007		371	370	369	370	377	380	381	382	379	380	384	388
2007-2008		389	390	390	391	395	401	405	407	412	420	425	428
2008-2009		433	437	444	451	458	461	464	462	459	462	466	472

Table 7.30

**STATE-WISE AND MONTH-WISE CONSUMER PRICE INDEX NUMBERS FOR
RURAL LABOURERS FOR THE YEARS 2006 - 07 TO 2008 - 09 (BY GROUPS)**

STATE: MADHYA PRADESH

(Base: 1986-87=100)

Group/Year	Weight	Month											
		Jul	Aug	Sep	Oct	Nov	Dec	Jan	Feb	Mar	Apr	May	Jun
1	2	3	4	5	6	7	8	9	10	11	12	13	14
<u>I-A-Food</u>	67.20												
2006-2007		379	382	390	396	402	400	397	399	397	398	399	404
2007-2008		412	413	409	413	416	420	415	415	427	437	438	442
2008-2009		455	461	464	465	466	466	468	473	476	480	496	512
<u>I-B-Pan, Supari,</u>	3.30												
<u>Tobacco &</u>													
<u>Intoxicants</u>													
2006-2007		411	411	411	414	419	421	423	426	427	433	441	442
2007-2008		453	457	458	459	461	461	463	467	471	471	475	483
2008-2009		490	497	493	493	493	499	511	514	514	516	539	547
<u>II-Fuel & Light</u>	7.50												
2006-2007		350	353	352	352	354	356	359	354	354	354	355	355
2007-2008		354	358	360	360	360	360	360	389	389	389	387	387
2008-2009		387	388	395	398	398	401	406	408	418	420	429	430
<u>III-Clothing,</u>	13.50												
<u>Bedding &</u>													
<u>Footwear</u>													
2006-2007		393	392	399	401	402	403	404	405	404	405	405	405
2007-2008		400	400	400	403	405	404	407	412	416	416	423	424
2008-2009		420	435	442	443	444	452	458	458	464	465	476	478
<u>IV-Miscellaneous</u>	8.50												
2006-2007		354	356	359	364	365	369	370	372	375	379	377	378
2007-2008		380	380	386	393	393	394	394	398	399	400	402	403
2008-2009		408	414	420	422	422	424	431	432	433	434	437	429
<u>General Index</u>	100.00												
2006-2007		377	380	386	391	396	395	394	395	394	395	396	400
2007-2008		405	406	404	408	410	412	410	413	421	429	430	434
2008-2009		442	449	453	455	455	457	460	464	468	471	484	495

Table 7.31

**STATE-WISE AND MONTH-WISE CONSUMER PRICE INDEX NUMBERS FOR
RURAL LABOURERS FOR THE YEARS 2006 - 07 TO 2008 - 09 (BY GROUPS)**

STATE: MAHARASHTRA

(Base: 1986-87=100)

Group/Year	Weight	Month											
		Jul	Aug	Sep	Oct	Nov	Dec	Jan	Feb	Mar	Apr	May	Jun
1	2	3	4	5	6	7	8	9	10	11	12	13	14
<u>I-A-Food</u>	62.39												
2006-2007		390	396	403	410	410	413	417	416	413	416	422	426
2007-2008		433	436	434	436	436	438	441	440	447	454	453	462
2008-2009		472	486	487	495	490	487	492	490	489	497	504	524
<u>I-B-Pan, Supari,</u>	3.37												
<u>Tobacco &</u>													
<u>Intoxicants</u>													
2006-2007		396	396	400	400	402	404	404	406	410	412	415	417
2007-2008		423	423	426	426	431	432	436	441	444	445	455	461
2008-2009		467	472	479	484	485	486	495	496	502	502	501	508
<u>II-Fuel & Light</u>	9.48												
2006-2007		376	376	378	378	379	388	394	395	394	396	397	397
2007-2008		398	403	403	402	408	410	413	415	416	415	418	418
2008-2009		421	421	428	429	428	428	426	428	430	428	428	436
<u>III-Clothing,</u>	11.90												
<u>Bedding &</u>													
<u>Footwear</u>													
2006-2007		350	348	349	352	352	352	351	352	354	354	354	353
2007-2008		355	356	358	357	358	359	362	363	364	365	369	371
2008-2009		377	381	382	387	388	390	386	387	388	389	392	405
<u>IV-Miscellaneous</u>	12.86												
2006-2007		398	398	399	401	402	399	401	402	403	404	405	406
2007-2008		411	413	415	424	426	427	428	431	434	439	442	445
2008-2009		448	453	456	461	462	463	464	465	466	467	470	471
<u>General Index</u>	100.00												
2006-2007		385	389	393	398	399	401	404	404	403	405	409	412
2007-2008		417	420	420	421	423	424	427	427	433	438	438	445
2008-2009		453	463	465	471	469	467	469	469	469	474	479	494

Table 7.32

**STATE-WISE AND MONTH-WISE CONSUMER PRICE INDEX NUMBERS FOR
RURAL LABOURERS FOR THE YEARS 2006 – 07 TO 2008 - 09 (BY GROUPS)**

STATE: MANIPUR

(Base: 1986-87=100)

Group/Year	Weight	Month											
		Jul	Aug	Sep	Oct	Nov	Dec	Jan	Feb	Mar	Apr	May	Jun
1	2	3	4	5	6	7	8	9	10	11	12	13	14
<u>I-A-Food</u>	67.70												
2006-2007		314	314	316	314	314	315	313	310	313	327	331	336
2007-2008		347	343	341	342	345	340	344	344	347	351	357	359
2008-2009		364	368	376	378	382	380	385	387	390	393	402	416
<u>I-B-Pan, Supari, Tobacco & Intoxicants</u>	4.50												
2006-2007		406	407	409	411	410	408	406	405	408	415	446	457
2007-2008		466	465	465	475	477	478	483	483	485	492	493	494
2008-2009		497	509	513	523	528	524	519	520	521	523	524	523
<u>II-Fuel & Light</u>	6.70												
2006-2007		491	491	491	491	491	496	500	502	502	502	502	508
2007-2008		513	513	518	518	518	527	533	533	540	545	552	552
2008-2009		565	568	571	571	574	578	588	591	591	591	591	594
<u>III-Clothing, Bedding & Footwear</u>	12.70												
2006-2007		327	327	327	327	327	327	327	328	331	331	335	335
2007-2008		344	348	349	350	353	354	360	360	363	364	368	368
2008-2009		370	374	383	385	391	397	399	400	403	406	406	407
<u>IV-Miscellaneous</u>	8.40												
2006-2007		341	341	341	341	341	341	341	341	342	342	342	345
2007-2008		346	348	354	360	362	366	369	370	371	374	375	380
2008-2009		381	386	389	391	410	416	419	422	422	422	423	427
<u>General Index</u>	100.00												
2006-2007		334	334	335	334	334	335	334	332	335	344	349	354
2007-2008		363	361	361	363	365	363	367	367	370	374	379	381
2008-2009		386	390	397	400	405	405	409	411	414	416	422	433

Table 7.33

**STATE-WISE AND MONTH-WISE CONSUMER PRICE INDEX NUMBERS FOR
RURAL LABOURERS FOR THE YEARS 2006 - 07 TO 2008 - 09 (BY GROUPS)**

STATE: MEGHALAYA

(Base: 1986-87=100)

Group/Year	Weight	Month											
		Jul	Aug	Sep	Oct	Nov	Dec	Jan	Feb	Mar	Apr	May	Jun
1	2	3	4	5	6	7	8	9	10	11	12	13	14
<u>I-A-Food</u>	70.50												
2006-2007		384	389	393	395	399	400	400	401	400	406	410	416
2007-2008		412	421	431	436	440	434	435	430	438	442	450	453
2008-2009		469	476	484	485	488	490	493	491	498	507	517	524
<u>I-B-Pan, Supari,</u>	8.60												
<u>Tobacco &</u>													
<u>Intoxicants</u>													
2006-2007		424	423	426	422	415	419	426	432	426	419	421	419
2007-2008		429	425	431	433	430	432	433	432	432	434	440	443
2008-2009		443	442	443	442	443	445	445	450	453	471	465	460
<u>II-Fuel & Light</u>	7.70												
2006-2007		413	412	422	424	428	428	428	428	428	425	422	423
2007-2008		413	413	413	413	419	419	421	419	419	419	411	412
2008-2009		409	412	409	410	413	411	411	412	413	416	413	419
<u>III-Clothing,</u>	5.40												
<u>Bedding &</u>													
<u>Footwear</u>													
2006-2007		378	378	377	380	379	384	384	390	392	396	396	396
2007-2008		400	411	409	412	411	413	413	412	413	415	413	420
2008-2009		419	412	422	423	429	430	431	435	435	440	448	448
<u>IV-Miscellaneous</u>	7.80												
2006-2007		454	462	458	455	461	461	466	476	477	469	471	471
2007-2008		481	478	481	482	485	486	486	491	493	493	496	493
2008-2009		492	497	493	494	495	496	496	506	506	506	530	529
<u>General Index</u>	100.00												
2006-2007		395	399	402	404	406	408	408	411	410	413	416	420
2007-2008		418	424	432	436	440	435	436	433	439	442	448	450
2008-2009		461	467	472	473	476	477	480	480	485	493	502	507

Table 7.34

**STATE-WISE AND MONTH-WISE CONSUMER PRICE INDEX NUMBERS FOR
RURAL LABOURERS FOR THE YEARS 2006 - 07 TO 2008 - 09 (BY GROUPS)**

STATE: ORISSA

(Base: 1986-87=100)

Group/Year	Weight	Month											
		Jul	Aug	Sep	Oct	Nov	Dec	Jan	Feb	Mar	Apr	May	Jun
1	2	3	4	5	6	7	8	9	10	11	12	13	14
<u>I-A-Food</u>	77.80												
2006-2007		329	339	345	355	359	354	353	352	352	359	357	364
2007-2008		374	382	387	395	391	389	382	386	390	399	405	412
2008-2009		424	429	430	433	427	423	420	418	429	436	446	457
<u>I-B-Pan, Supari,</u>	2.10												
<u>Tobacco &</u>													
<u>Intoxicants</u>													
2006-2007		401	396	402	402	402	407	420	423	428	428	429	428
2007-2008		423	426	440	445	457	474	486	518	516	496	494	499
2008-2009		510	512	515	533	536	548	558	560	563	563	572	587
<u>II-Fuel & Light</u>	8.40												
2006-2007		406	409	409	409	411	414	414	414	418	418	418	418
2007-2008		422	426	415	415	414	418	420	429	432	436	436	437
2008-2009		438	441	452	462	462	467	470	471	475	476	476	477
<u>III-Clothing,</u>	5.80												
<u>Bedding &</u>													
<u>Footwear</u>													
2006-2007		446	450	446	448	447	446	448	444	448	449	449	449
2007-2008		449	450	453	456	456	455	457	461	458	461	463	463
2008-2009		467	471	474	475	474	475	478	479	481	483	487	486
<u>IV-Miscellaneous</u>	5.90												
2006-2007		376	377	380	380	381	383	383	382	382	384	387	389
2007-2008		394	395	395	396	396	398	398	398	404	402	405	408
2008-2009		413	417	419	420	427	428	430	430	431	430	431	432
<u>General Index</u>	100.00												
2006-2007		346	355	360	368	371	367	367	366	367	372	371	376
2007-2008		385	391	395	401	398	398	393	398	401	408	413	419
2008-2009		429	433	435	439	435	433	431	430	439	445	452	462

Table 7.35

**STATE-WISE AND MONTH-WISE CONSUMER PRICE INDEX NUMBERS FOR
RURAL LABOURERS FOR THE YEARS 2006 - 07 TO 2008 - 09 (BY GROUPS)**

STATE: PUNJAB		(Base: 1986-87=100)											
Group/Year	Weight	Month											
		Jul	Aug	Sep	Oct	Nov	Dec	Jan	Feb	Mar	Apr	May	Jun
1	2	3	4	5	6	7	8	9	10	11	12	13	14
<u>I-A-Food</u>	56.50												
2006-2007		413	419	426	435	442	443	440	441	437	440	434	440
2007-2008		441	447	462	459	448	441	442	453	466	480	480	489
2008-2009		502	516	523	520	523	516	517	521	523	531	554	560
<u>I-B-Pan, Supari, Tobacco & Intoxicants</u>	2.60												
2006-2007		410	407	406	429	429	430	430	430	434	443	423	422
2007-2008		421	423	424	426	427	429	430	430	425	448	451	453
2008-2009		460	459	470	475	496	498	498	507	502	502	518	509
<u>II-Fuel & Light</u>	7.40												
2006-2007		425	425	426	426	428	438	459	459	464	496	506	512
2007-2008		511	527	528	539	539	547	548	561	567	576	580	577
2008-2009		577	583	588	592	592	593	594	585	587	587	588	610
<u>III-Clothing, Bedding & Footwear</u>	19.70												
2006-2007		387	395	396	393	394	390	390	394	395	395	400	403
2007-2008		410	414	414	417	417	416	417	417	416	417	419	424
2008-2009		425	431	438	445	451	453	459	469	470	471	476	476
<u>IV-Miscellaneous</u>	13.80												
2006-2007		356	362	363	365	365	370	371	374	374	376	378	387
2007-2008		394	395	394	396	396	398	399	401	405	406	407	409
2008-2009		412	418	420	422	422	421	420	420	425	425	433	432
<u>General Index</u>	100.00												
2006-2007		401	406	411	416	420	422	422	424	422	427	425	430
2007-2008		433	438	447	447	441	437	439	446	454	464	465	471
2008-2009		479	489	495	496	499	496	497	501	503	508	523	528

Table 7.36

**STATE-WISE AND MONTH-WISE CONSUMER PRICE INDEX NUMBERS FOR
RURAL LABOURERS FOR THE YEARS 2006 - 07 TO 2008 - 09 (BY GROUPS)**

STATE: RAJASTHAN

(Base: 1986=87=100)

Group/Year	Weight	Month											
		Jul	Aug	Sep	Oct	Nov	Dec	Jan	Feb	Mar	Apr	May	Jun
1	2	3	4	5	6	7	8	9	10	11	12	13	14
<u>I-A-Food</u>	60.30												
2006-2007		397	404	410	411	416	416	422	427	428	430	422	419
2007-2008		426	426	427	428	426	423	426	430	442	445	446	452
2008-2009		467	473	477	479	478	473	481	487	493	500	517	528
<u>I-B-Pan, Supari, Tobacco & Intoxicants</u>	3.70												
2006-2007		422	426	422	425	426	427	425	430	436	452	476	482
2007-2008		495	494	494	507	506	529	520	519	518	517	530	529
2008-2009		537	546	548	541	541	551	560	563	563	564	572	582
<u>II-Fuel & Light</u>	7.40												
2006-2007		398	401	408	408	411	419	425	425	426	440	443	430
2007-2008		432	432	432	445	445	461	473	473	473	473	473	473
2008-2009		484	484	484	485	493	501	502	508	527	528	531	534
<u>III-Clothing, Bedding & Footwear</u>	14.10												
2006-2007		391	397	405	405	407	413	414	415	418	422	426	434
2007-2008		434	435	436	437	437	444	449	450	449	450	452	457
2008-2009		458	464	471	468	470	476	486	488	494	496	500	501
<u>IV-Miscellaneous</u>	14.50												
2006-2007		369	368	366	380	380	382	382	390	391	391	391	396
2007-2008		402	408	408	416	417	417	424	424	424	433	435	435
2008-2009		438	440	440	460	460	461	459	458	461	461	463	466
<u>General Index</u>	100.00												
2006-2007		393	398	403	406	409	411	415	420	422	425	422	421
2007-2008		427	428	428	432	431	432	436	438	445	448	450	455
2008-2009		465	470	474	478	478	477	483	487	493	498	510	517

Table 7.37

**STATE-WISE AND MONTH-WISE CONSUMER PRICE INDEX NUMBERS FOR
RURAL LABOURERS FOR THE YEARS 2006 - 07 TO 2008 - 09 (BY GROUPS)**

STATE: TAMIL NADU

(Base: 1986-87=100)

Group/Year	Weight	Month											
		Jul	Aug	Sep	Oct	Nov	Dec	Jan	Feb	Mar	Apr	May	Jun
1	2	3	4	5	6	7	8	9	10	11	12	13	14
<u>I-A-Food</u>	64.10												
2006-2007		326	325	328	330	337	342	345	347	344	346	350	354
2007-2008		357	356	355	356	362	367	370	376	383	389	395	394
2008-2009		402	410	422	425	430	433	436	435	429	428	434	444
<u>I-B-Pan, Supari, Tobacco & Intoxicants</u>	4.10												
2006-2007		485	500	505	511	513	518	539	547	538	533	536	561
2007-2008		552	551	557	561	563	575	583	568	565	586	592	622
2008-2009		615	606	626	634	639	642	657	645	662	675	692	705
<u>II-Fuel & Light</u>	7.30												
2006-2007		412	417	419	423	418	420	420	432	433	451	459	461
2007-2008		462	465	471	470	471	475	476	491	496	504	509	519
2008-2009		517	521	522	525	536	547	551	569	571	569	574	579
<u>III-Clothing, Bedding & Footwear</u>	7.90												
2006-2007		347	343	344	346	347	346	348	348	354	355	353	349
2007-2008		353	354	357	358	359	357	362	361	364	366	366	367
2008-2009		365	366	367	368	371	373	375	373	376	377	375	383
<u>IV-Miscellaneous</u>	16.60												
2006-2007		428	428	430	432	434	436	437	437	437	438	440	441
2007-2008		443	445	451	453	456	456	460	460	463	467	472	473
2008-2009		480	482	485	488	495	498	502	503	505	506	508	512
<u>General Index</u>	100.00												
2006-2007		357	358	360	362	367	371	374	377	374	377	380	384
2007-2008		387	387	388	389	394	397	400	405	410	417	422	424
2008-2009		429	435	444	447	452	456	459	459	458	457	462	471

Table 7.38

**STATE-WISE AND MONTH-WISE CONSUMER PRICE INDEX NUMBERS FOR
RURAL LABOURERS FOR THE YEARS 2006 - 07 TO 2008 - 09 (BY GROUPS)**

STATE: TRIPURA

(Base: 1986-87=100)

Group/Year	Weight	Month											
		Jul	Aug	Sep	Oct	Nov	Dec	Jan	Feb	Mar	Apr	May	Jun
1	2	3	4	5	6	7	8	9	10	11	12	13	14
<u>I-A-Food</u>	72.30												
2006-2007		359	360	364	373	366	358	353	357	363	365	368	377
2007-2008		375	386	401	408	403	406	391	382	388	400	400	403
2008-2009		410	418	421	426	434	432	430	429	432	437	440	445
<u>I-B-Pan, Supari, Tobacco & Intoxicants</u>	4.20												
2006-2007		461	423	425	434	436	435	445	446	453	463	462	453
2007-2008		453	435	431	430	437	452	455	462	473	466	473	471
2008-2009		468	468	465	468	456	453	461	465	470	477	479	477
<u>II-Fuel & Light</u>	6.20												
2006-2007		261	270	272	283	285	287	287	287	287	287	287	287
2007-2008		287	286	286	286	286	286	286	286	286	286	286	286
2008-2009		286	287	290	290	297	312	318	321	329	332	341	343
<u>III-Clothing, Bedding & Footwear</u>	8.20												
2006-2007		480	481	495	503	500	504	504	504	504	504	502	501
2007-2008		503	503	502	501	501	500	500	499	494	484	483	482
2008-2009		482	482	482	482	483	484	482	481	481	481	481	480
<u>IV-Miscellaneous</u>	9.10												
2006-2007		347	350	352	353	369	369	369	370	372	372	373	373
2007-2008		373	374	384	385	385	386	396	418	418	418	418	419
2008-2009		423	424	426	427	431	430	432	432	433	433	450	450
<u>General Index</u>	100.00												
2006-2007		366	366	370	379	375	370	367	370	374	376	378	384
2007-2008		383	390	402	407	403	406	397	393	397	404	404	407
2008-2009		412	418	420	424	431	430	429	428	432	436	440	443

Table 7.39

**STATE-WISE AND MONTH-WISE CONSUMER PRICE INDEX NUMBERS FOR
RURAL LABOURERS FOR THE YEARS 2006 - 07 TO 2008 - 09 (BY GROUPS)**

STATE: UTTAR PRADESH

(Base: 1986-87=100)

Group/Year	Weight	Month											
		Jul	Aug	Sep	Oct	Nov	Dec	Jan	Feb	Mar	Apr	May	Jun
1	2	3	4	5	6	7	8	9	10	11	12	13	14
<u>I-A-Food</u>	64.20												
2006-2007		396	397	410	418	431	424	425	424	428	430	426	428
2007-2008		435	442	444	441	438	429	427	439	454	459	455	458
2008-2009		469	476	477	474	472	464	468	471	477	487	494	504
<u>I-B-Pan, Supari,</u>	2.80												
<u>Tobacco &</u>													
<u>Intoxicants</u>													
2006-2007		435	437	437	438	439	441	444	434	436	437	440	448
2007-2008		479	486	490	495	497	510	510	513	513	523	524	525
2008-2009		529	527	531	539	543	543	540	541	546	550	554	561
<u>II-Fuel & Light</u>	8.90												
2006-2007		334	334	331	333	354	360	356	356	358	359	376	378
2007-2008		373	375	379	378	381	392	397	400	395	421	423	431
2008-2009		439	451	456	455	459	466	473	469	467	471	471	473
<u>III-Clothing,</u>	10.50												
<u>Bedding &</u>													
<u>Footwear</u>													
2006-2007		392	397	397	400	405	396	402	404	405	409	407	405
2007-2008		407	407	407	408	415	409	412	415	416	417	429	431
2008-2009		429	437	447	450	456	453	457	454	457	463	465	468
<u>IV-Miscellaneous</u>	13.60												
2006-2007		381	383	384	388	389	395	395	396	394	395	403	406
2007-2008		406	409	409	411	412	414	415	415	415	416	418	428
2008-2009		434	435	434	436	438	426	428	424	424	424	422	422
<u>General Index</u>	100.00												
2006-2007		389	391	399	405	416	412	413	412	415	417	417	418
2007-2008		424	429	431	430	429	424	424	432	441	448	446	450
2008-2009		459	465	468	467	466	460	464	464	469	477	481	488

Table 7.40

**STATE-WISE AND MONTH-WISE CONSUMER PRICE INDEX NUMBERS FOR
RURAL LABOURERS FOR THE YEARS 2006 - 07 TO 2008 - 09 (BY GROUPS)**

STATE: WEST BENGAL

(Base: 1986-87=100)

Group/Year	Weight	Month											
		Jul	Aug	Sep	Oct	Nov	Dec	Jan	Feb	Mar	Apr	May	Jun
1	2	3	4	5	6	7	8	9	10	11	12	13	14
<u>I-A-Food</u>	75.90												
2006-2007		334	332	341	349	349	346	342	340	343	344	349	353
2007-2008		357	366	375	382	383	377	375	380	389	398	396	399
2008-2009		404	413	417	422	421	418	415	414	413	420	428	434
<u>I-B-Pan, Supari, Tobacco & Intoxicants</u>	3.00												
2006-2007		407	407	410	421	425	431	430	430	432	431	430	432
2007-2008		431	425	425	426	426	427	447	431	435	439	436	444
2008-2009		444	474	476	477	500	498	500	499	517	517	519	522
<u>II-Fuel & Light</u>	7.40												
2006-2007		395	395	399	399	401	398	398	399	398	400	400	399
2007-2008		399	403	400	407	407	408	413	410	418	419	421	425
2008-2009		425	434	447	448	455	456	456	461	465	474	478	481
<u>III-Clothing, Bedding & Footwear</u>	5.80												
2006-2007		485	487	494	495	499	491	485	481	482	482	482	482
2007-2008		481	476	475	474	474	475	479	479	480	480	491	493
2008-2009		493	494	501	503	507	508	511	535	542	546	546	537
<u>IV-Miscellaneous</u>	7.90												
2006-2007		451	456	463	464	466	469	470	470	472	473	473	473
2007-2008		473	470	471	472	472	472	467	475	475	476	477	474
2008-2009		474	480	483	484	486	488	488	499	513	515	520	521
<u>General Index</u>	100.00												
2006-2007		359	357	366	372	373	371	367	365	368	369	373	376
2007-2008		378	385	392	397	399	394	393	397	405	412	411	413
2008-2009		417	426	431	435	436	434	432	434	435	442	449	453

Table 8

**GROUP-WISE LINKING FACTORS BETWEEN NEW SERIES OF
ALL-INDIA CONSUMER PRICE INDEX FOR AGRICULTURAL LABOURERS
ON BASE 1986-87=100 AND THE OLD SERIES ON BASE 1960-61=100**

Group	Linking Factor
1	2
I-A Food	6.38
II-Fuel and Light	1.22
III-Clothing, Bedding & Footwear	5.35
GENERAL	5.89

Note:- (i) The conversion factors for linking the new series of CPI Numbers for Agricultural Labourers (Base: 1986-87=100) with the old series of CPI Numbers for Agricultural Labourers (Base: 1960-61=100) have been worked out for Food, Fuel & Light, Clothing, Bedding & Footwear and General Index only as Pan, Supari, Tobacco & Intoxicants Group was merged with Miscellaneous Group in old series (Base: 1960-61=100).

(ii) The indices on old base (1960-61=100) can be obtained by multiplying the index number on new base (1986-87=100) by the relevant linking factor given above and rounding off to the nearest whole number.

(iii) The new series of Consumer Price Index Numbers for Rural Labourers on base 1986-87=100 has been introduced for the first time and hence there is no linking factor.

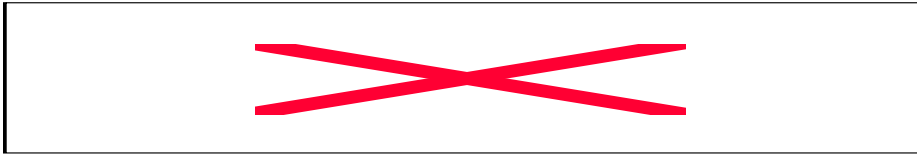
Table 9

**STATE-WISE LINKING FACTORS BETWEEN NEW SERIES OF THE CONSUMER PRICE INDEX NUMBERS FOR AGRICULTURAL LABOURERS ON BASE 1986-87=100 AND THE OLD SERIES ON BASE 1960-61=100
(GENERAL AND FOOD INDEX)**

Sl.No.	State	Linking Factor ^a	
		General Index	Food Index
1	2	3	4
1	Andhra Pradesh	4.84	5.07
2	Assam	b	b
3	Bihar	6.22	6.84
4	Gujarat	5.34	5.65
5	Haryana	*	*
6	Himachal Pradesh	*	*
7	Jammu & Kashmir	5.98	6.31
8	Karnataka	5.81	5.99
9	Kerala	6.56	7.24
10	Madhya Pradesh	6.04	6.80
11	Maharashtra	5.85	6.25
12	Manipur	*	*
13	Meghalaya	*	*
14	Orissa	6.05	6.79
15	Punjab	c	c
16	Rajasthan	6.15	6.57
17	Tamil Nadu	5.67	5.97
18	Tripura	*	*
19	Uttar Pradesh	6.60	7.30
20	West Bengal	5.73	6.23
All-India		5.89	6.38

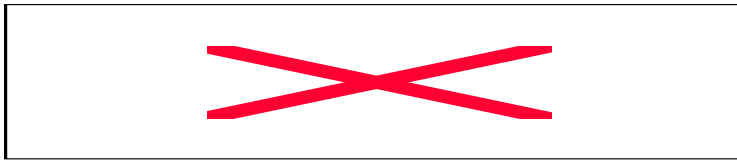
a -The Indices for a given month of old base (1960-61=100) can be obtained by multiplying the index numbers of new base (1986-87=100) of that month by the relevant linking factors. New series of the Consumer Price Index Numbers for Rural Labourers on base 1986-87 =100 has been introduced for the first time.

b - The General and Food indices in respect of Assam on old base can be estimated from their corresponding indices of the new series as follows:-



Where I_O represents Index Numbers for old series (1960-61=100) and I_N represents that for new series (1986-87=100). 'A', 'Ma', 'Me', and 'T' indicate Assam, Manipur, Meghalaya and Tripura respectively.

c - The General and Food indices in respect of Punjab on old base can be derived from the corresponding indices of the new series as follows:-



Where I_O represents Index Numbers for old series (1960-61=100) and I_N represents that for new series (1986-87=100). 'P', 'Ha', 'Hi' stand for Punjab, Haryana and Himachal Pradesh respectively.

*Denotes new State under 1986-87 series.

Table 10

**ALL-INDIA ITEM-WISE WEIGHTS FOR NEW SERIES OF THE CONSUMER PRICE INDEX NUMBERS
ON BASE 1986-87=100 FOR AGRICULTURAL AND RURAL LABOURERS**

Sl.No.	Group/Sub-group/Item	Weights for	
		Agricultural Labourers	Rural Labourers
1	2	3	4
<u>I-A FOOD</u>			
a) Cereals & products			
1	Rice	24.00	22.66
2	Wheat	0.62	0.59
3	Wheat Atta	7.06	6.60
4	Jowar	3.92	3.35
5	Jowar Atta	0.16	0.18
6	Bajra	1.06	1.05
7	.Bajra Atta	0.52	0.48
8	Maize	1.60	1.35
9	Maize Atta	0.12	0.14
10	Ragi	1.12	1.06
11	Gram	0.07	0.07
12	Barley	0.07	0.08
13	Millets	0.10	0.09
14	Topioca	0.15	0.11
15	Chira	0.35	0.32
16	Muri	0.02	0.01
17	Bread	*	0.01
	Total	40.94	38.15
b) Pulses and Products			
1	Arhar dal	1.37	1.32
2	Gram dal	0.29	0.30
3	Masur dal	0.44	0.45
4	Moong dal	0.56	0.53
5	Urd dal	0.36	0.45

1	2	3	4
6	Khesari dal	0.21	0.17
7	Pea dal	0.01	0.01
8	Soyabean	*	*
9	Rajmah	0.02	0.02
10	Besan	0.13	0.15
	Total	3.39	3.40
c) Oils and Fats			
1	Groundnut oil	1.82	1.73
2	Gingelly oil	0.09	0.09
3	Mustard oil	1.32	1.26
4	Coconut oil	0.14	0.19
5	Linseed oil	0.08	0.07
6	Palm oil	0.09	0.10
7	Rapeseed oil	0.01	0.03
8	Refined oil	*	*
9	Vanaspati	0.28	0.32
	Total	3.83	3.79
d) Meat, Fish & Eggs			
1	Meat Goat	1.11	1.22
2	Meat Buffalo	0.06	0.05
3	Beef	0.15	0.15
4	Pork	0.07	0.08
5	Poultry	0.22	0.23
6	Fish Fresh	1.16	1.20
7	Fish Dry	0.19	0.22
8	Eggs	0.14	0.16
	Total	3.10	3.31
e) Milk & Products			
1	Milk Liquid	3.18	3.32
2	Ghee	0.34	0.40
3	Curd	0.22	0.22
	Total	3.74	3.94

1	2	3	4
f) Condiments & Spices			
1	Salt	0.23	0.21
2	Onion	0.72	0.70
3	Chillies Green	0.25	0.23
4	Chillies Dry	1.04	0.98
5	Turmeric Whole	0.32	0.28
6	Tamarind	0.34	0.33
7	Black Pepper	0.08	0.08
8	Garlic	0.24	0.21
9	Zinger	0.04	0.04
10	Mixed Spices	0.86	0.86
	Total	4.12	3.92
g) Vegetable & Fruits			
1	Potato	1.51	1.45
2	Sweet Potato	0.02	0.01
3	Radish	0.01	0.02
4	Arum	0.02	0.02
5	Carrot	*	*
6	Turnip	*	*
7	Mustard Leaves	0.01	0.02
8	Palak/B. Sag	0.60	0.55
9	Brinjal	0.82	0.79
10	Tomato	0.26	0.28
11	Cucumber	0.04	0.04
12	Gourd	0.20	0.20
13	Pumpkin	0.10	0.10
14	Lady's Finger	0.21	0.22
15	Torai	0.10	0.10
16	Beans	0.01	0.01
17	Cauliflower	0.13	0.09
18	Cabbage	0.09	0.11
19	Bitter Gourd	0.05	0.04
20	Banana	0.18	0.22
21	Orange	*	*
22	Coconut	0.53	0.61

1	2	3	4
23	Mango	0.16	0.16
24	Lemon	*	*
25	Guava	0.01	0.01
26	Pine Apple	*	*
	Total	5.06	5.05
	h) Others		
1	Sugar	1.31	1.38
2	Khandsari	0.03	0.03
3	Gur	1.24	1.18
4	Tea Readymade	0.91	1.04
5	Coffee Readymade	0.05	0.05
6	Tea Leaf	0.83	0.85
7	Groundnut	0.01	0.01
8	Coffee Powder	0.08	0.09
9	Salted Refreshment	0.31	0.36
10	Biscuits	0.10	0.11
11	Prepared Sweets	0.10	0.11
	Total	4.97	5.21
	TOTAL FOOD GROUP	69.15	66.77
	<u>I-B PAN, SUPARI, TOBACCO & INTOXICANTS</u>		
1	Bidi	1.48	1.42
2	Cigarette	0.07	0.10
3	Cheroot	0.09	0.08
4	Snuff	0.03	0.02
5	Tobacco Leaf	0.46	0.44
6	Hukka Tobacco	0.02	0.02
7	Pan Leaf	0.25	0.25
8	Pan Finished	0.10	0.10
9	Supari Whole	0.25	0.23
10	Lime	*	*
11	Katha	0.01	0.01
12	Zarda-Kimam	0.01	0.01
13	Country Liquor	0.68	0.69
14	Toddy	0.34	0.33
	Total	3.79	3.70

1	2	3	4
<u>II- FUEL & LIGHT</u>			
1	Firewood	6.63	6.22
2	Kerosene Oil	1.22	1.19
3	Match Box	0.35	0.31
4	Coal Soft	0.05	0.07
5	Candle	-	*
6	Electricity Charges	0.10	0.11
7	Electric Bulb	*	*
Total		8.35	7.90
<u>III- CLOTHING, BEDDING & FOOTWEAR</u>			
1	Dhoti Cotton Mill	0.51	0.49
2	Dhoti Cotton Handloom	0.06	0.05
3	Dhoti Powerloom	0.09	0.08
4	Saree Cotton Mill	1.17	1.12
5	Saree Syn. Mill	0.21	0.21
6	Saree Cotton Handloom	0.32	0.30
7	Saree P. Loom	0.32	0.29
8	Shirting Cloth Powerloom	0.06	0.14
9	Shirting cloth Cotton Mill	2.12	1.99
10	Shirting Cloth Khadi	0.07	0.11
11	Shirting Cloth Synthetic	0.63	0.69
12	Handkerchief	0.01	0.01
13	Bath Towel Mill	0.05	0.04
14	Bath Towel Handloom	0.05	0.05
15	Chaddar Handloom	0.00	0.00
16	Chaddar Mill	0.07	0.06
17	Pillow Cotton	0.03	0.04
18	Mosquito Net	*	*
19	Knitted Garments (Wool)	0.01	0.01
20	Blanket	*	*
21	Ganji (Banian)	0.15	0.15
22	Orni	0.08	0.07
23	Lungi Handloom	0.27	0.27
24	Leather Chappal	0.11	0.87
25	Plastic Chappal	0.05	0.32
26	Leather Shoes	0.27	0.86
27	Plastic Shoes	0.27	1.54
Total		6.98	9.76

1	2	3	4
<u>IV-MISCELLANEOUS</u>			
a) Medical Care			
1	Allopathic Medicine	3.89	3.74
2	Homeopathic Medicine	0.03	0.03
3	Ayurvedic Medicine	0.05	0.06
4	Doctor's Fee (Allopathic)	0.41	0.40
	Total	4.38	4.23
b) Education, Recreation & Amusement			
1	School Text Book	0.22	0.22
2	Stationery	0.15	0.11
3	School Fee	0.04	0.05
4	News Paper	0.00	0.01
5	Cinema Ticket	0.42	0.49
6	Transistor Radio	0.11	0.11
7	Ball Point Pen	*	*
	Total	0.94	0.99
c) Transport & Communication			
1	Railway Fare	0.11	0.14
2	Boat Fare	0.01	0.01
3	Bus Fare	1.39	1.46
4	Rickshaw Charges	0.02	0.02
5	Bicycle	0.12	0.16
6	Tyre	0.02	0.01
7	Postal Charges	*	*
	Total	1.67	1.80
d) Personal Care & Effects			
1	Toilet Soap	0.51	0.57
2	Hair Oil	0.86	0.95
3	Shaving Blade	0.02	0.03
4	Face Powder	0.04	0.13
5	Tooth Paste/Brush	0.07	0.10
6	Comb	*	*
7	Barber Charges	0.48	0.46
8	Wrist Watch	0.02	0.01
9	Umbrella/Raincoat	0.01	0.01
10	Torch Light	0.03	0.02
	Total	2.04	2.28

1	2	3	4
	e) Others		
1	Washing Soda	0.23	0.20
2	Washing Soap	1.42	1.44
3	Aluminium Vessel	0.36	0.28
4	Brass Utensils	0.23	0.19
5	Utensil Stainless Steel	0.09	0.04
6	Earthenware	0.11	0.12
7	Lantern	*	-
8	Cot	0.06	0.05
9	Chair	*	0.01
10	Table Fan	0.01	0.01
11	Washerman Charges	0.16	0.17
12	Tailoring Charges	0.03	0.06
	Total	2.70	2.57
	TOTAL MISCELLANEOUS GROUP	11.73	11.87
	GRAND TOTAL	100.00	100.00

- No Weight

*Negligible Weight

Table 11

**POINT TO POINT RATE OF INFLATION IN RESPECT OF THE CONSUMER PRICE INDEX
NUMBERS FOR AGRICULTURAL AND RURAL LABOURERS (BASE: 1986-87=100)**

Year/Month	(Percent)			
	Agricultural Labourers		Rural Labourers	
	2007-2008	2008-2009	2007-2008	2008-2009
July	8.60	9.41	8.02	9.41
August	8.80	10.29	8.51	10.29
September	7.89	10.98	7.61	10.98
October	6.99	11.14	6.72	11.14
November	6.15	11.11	5.88	11.11
December	5.90	11.14	5.63	11.14
January	5.63	11.62	5.88	11.35
February	6.38	10.79	6.11	10.79
March	7.91	9.46	7.63	9.69
April	8.88	9.09	8.61	9.09
May	9.11	10.21	8.84	10.21
June	8.77	11.52	8.75	11.26

ANNEXURE-I

LIST OF REPORTS BROUGHT OUT SO FAR ON THE SUBJECT

Sl.No.	Name of the Publication	Year of Release	Price (In Rupees)
1	2	3	4
1	Consumer Price Index Numbers (For Agricultural and Rural Labourers) 1986-87=100 Annual Report 1997-98	1999	110.00
2	Consumer Price Index Numbers (For Agricultural and Rural Labourers) 1986-87=100 Annual Report 1998-99	2000	120.00
3	Consumer Price Index Numbers (For Agricultural and Rural Labourers) 1986-87=100 Annual Report 1999-2000	2001	150.00
4	Consumer Price Index Numbers (For Agricultural and Rural Labourers) 1986-87=100 Annual Report 2000-2001	2002	150.00
5	Consumer Price Index Numbers (For Agricultural and Rural Labourers) 1986-87=100 Annual Report 2001-2002	2003	150.00
6	Consumer Price Index Numbers (For Agricultural and Rural Labourers) 1986-87=100 Annual Report 2002-2003	2004	150.00
7	Consumer Price Index Numbers (For Agricultural and Rural Labourers) 1986-87=100 Annual Report 2003-2004	2005	130.00
8	Consumer Price Index Numbers (For Agricultural and Rural Labourers) 1986-87=100 Annual Report 2004-2005	2006	50.00
9	Consumer Price Index Numbers (For Agricultural and Rural Labourers) 1986-87=100 Annual Report 2005-2006	2007	50.00
10	Consumer Price Index Numbers (For Agricultural and Rural Labourers) 1986-87=100 Annual Report 2006-2007	2008	50.00
11	Consumer Price Index Numbers (For Agricultural and Rural Labourers) 1986-87=100 Annual Report 2007-2008	2009	60.00

ANNEXURE-II**List of Officers / Staff Members associated with the Report**

S/Shri /Smt/Kum.

I. S. Negi	Director
H. S. Langa	Investigator Grade-I
Dila Ram Sharma	Investigator Grade-II
Rup Singh	Investigator Grade-II
Meena Kumari	Investigator Grade-II
Veena Walia	Investigator Grade-II